

**PE anti-human CD2**

**Catalog # / Size:** 2101040 / 100 tests  
2101035 / 25 tests

**Clone:** RPA-2.10

**Isotype:** Mouse IgG1, κ

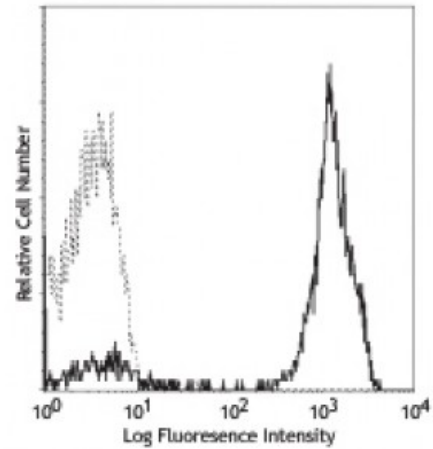
**Reactivity:** Human

**Preparation:** The antibody was purified by affinity chromatography, and conjugated with PE under optimal conditions. The solution is free of unconjugated PE and unconjugated antibody.

**Formulation:** Phosphate-buffered solution, pH 7.2, containing 0.09% sodium azide and 0.2% (w/v) BSA (origin USA).

**Workshop Number:** IV T085

**Concentration:** Lot-specific



Human peripheral blood lymphocytes stained with RPA-2.10 PE

**Applications:**

**Applications:** Flow Cytometry

**Recommended Usage:** Each lot of this antibody is quality control tested by immunofluorescent staining with flow cytometric analysis. **Test size products are transitioning from 20 microL to 5 microL per test.** Please check your vial or your CoA to find the suggested use of this reagent per million cells in 100 microL staining volume or per 100 microL of whole blood. It is recommended that the reagent be titrated for optimal performance for each application.

**Application Notes:** Additional reported applications (for the relevant formats) include: immunohistochemical staining of acetone-fixed frozen tissue sections<sup>6</sup> and blocking of T cell activation<sup>2</sup>. The LEAF™ purified antibody (Endotoxin <0.1 EU/μg, Azide-Free, 0.2 μm filtered) is recommended for functional assays (Cat. No. 300212).

**Application References:**

- Knapp W, *et al.* Eds. 1989. Leucocyte Typing IV. Oxford University Press. New York.
- Aversa G, *et al.* 1987. *Transplant. Proc.* 19:277. (Block)
- Zaretsky AG, *et al.* 2009. *J. Exp Med.* 206:991. (IHC) [PubMed](#)
- Perona-Wright G, *et al.* 2010. *Nat. Immunol.* 11:520. (FC) [PubMed](#)
- Thummler K, *et al.* 2010. *J. Leukoc. Biol.* 88:1041.
- Kap Y, *et al.* 2009. *J. Histochem. Cytochem.* 57:1159. (IHC)
- Yoshino N, *et al.* 2000. *Exp. Anim. (Tokyo)* 49:97. (FC)

**Description:** CD2 is a 50 kD type I transmembrane glycoprotein also known as LFA-2, T11, and sheep red blood cell receptor (SRBC-R). This immunoglobulin superfamily member is expressed on thymocytes, T lymphocytes, NK cells, and thymic B cell subsets. The major ligand for CD2 is CD58 (also known as LFA-3). CD2 has also been reported to bind CD48, CD59, and CD15. CD2 plays a critical role in alternative T cell activation, T cell signaling, and cell-cell adhesion.

**Antigen References:**

- Bell G, *et al.* 1995. *J. Immunol.* 155:2805.
- Bierer B, *et al.* 1989. *Annu. Rev. Immunol.* 7:579.

3. Moingeon P, *et al.* 1989. *Immunol. Rev.* 111:111.