

Brilliant Violet 421™ anti-human CD1a

Catalog # / Size: 2100635 / 25 tests
2100640 / 100 tests

Clone: HI149

Isotype: Mouse IgG1, κ

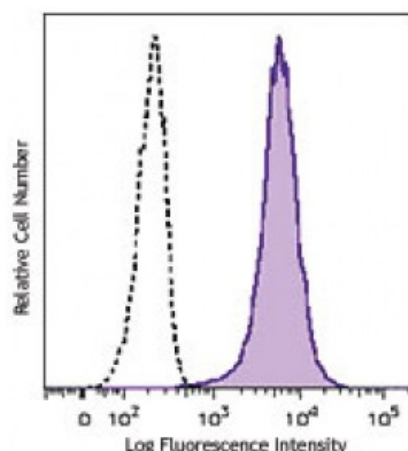
Reactivity: Human

Preparation: The antibody was purified by affinity chromatography and conjugated with Brilliant Violet 421™ under optimal conditions. The solution is free of unconjugated Brilliant Violet 421™ and unconjugated antibody.

Formulation: Phosphate-buffered solution, pH 7.2, containing 0.09% sodium azide and BSA (origin USA).

Workshop Number: V CD01.01

Concentration: Lot-specific



Human T leukemia cell line (MOLT-4) was stained with CD1a (clone HI149) Brilliant Violet 421™ (filled histogram) or mouse IgG1, κ Brilliant Violet 421™ isotype control (open histogram).

Applications:

Applications: Flow Cytometry

Recommended Usage: Each lot of this antibody is quality control tested by immunofluorescent staining with flow cytometric analysis. For flow cytometric staining, the suggested use of this reagent is ≤ 5 microL per million cells or 5 microL per 100 microL of whole blood. It is recommended that the reagent be titrated for optimal performance for each application.

Brilliant Violet 421™ excites at 405 nm and emits at 421 nm. The standard bandpass filter 450/50 nm is recommended for detection. Brilliant Violet 421™ is a trademark of Sirigen Group Ltd.

This product is subject to proprietary rights of Sirigen Inc. and is made and sold under license from Sirigen Inc. The purchase of this product conveys to the buyer a non-transferable right to use the purchased product for research purposes only. This product may not be resold or incorporated in any manner into another product for resale. Any use for therapeutics or diagnostics is strictly prohibited. This product is covered by U.S. Patent(s), pending patent applications and foreign equivalents.

Application Notes: Additional reported applications (for the relevant formats) include: immunohistochemical staining of acetone-fixed frozen tissue sections.

Application References:

- Schlossman S, *et al.* Eds. 1995. Leucocyte Typing V. Oxford University Press. New York.
- Knapp W. 1989. Leucocyte Typing IV. Oxford University Press New York.
- Patton KM, *et al.* 2005. *Infect. Immun.* 73:2083. [PubMed](#)
- Curti A, *et al.* 2010. *Haematologica.* 95:2022. [PubMed](#)

Description: CD1a is a 49 kD member of the immunoglobulin superfamily also known as T6 and R4. It is a type I membrane glycoprotein with structural similarities to MHC class I and is non-covalently associated with β_2 -microglobulin. CD1a plays a role in non-

peptide glycolipid antigen presentation to CD1-restricted T cells. It is expressed on cortical double positive and single positive thymocytes, Langerhans cells, and dendritic cells. In addition to antigen presentation, CD1a has been implicated in thymic T cell development.

**Antigen
References:**

1. Blumberg RS, *et al.* 1995. *Immunol. Rev.* 147:5.
2. Calabi F, *et al.* 1991. *Tissue Antigens* 37:1.
3. Melian A, *et al.* 1996. *Curr. Opin. Immunol.* 8:82.