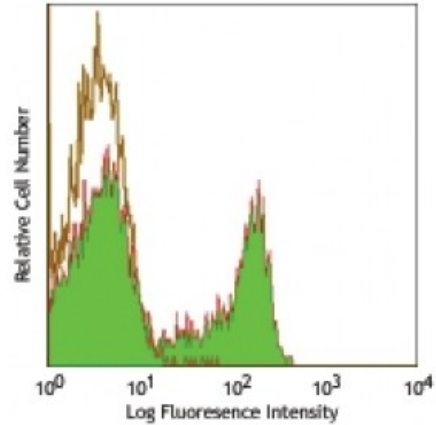


**Alexa Fluor® 488 anti-rat CD45RA**

**Catalog # / Size:** 1611550 / 100 µg  
**Clone:** OX-33  
**Isotype:** Mouse IgG1, κ  
**Immunogen:** Leukocyte common antigen purified from rat splenocytes.  
**Reactivity:** Rat  
**Preparation:** The antibody was purified by affinity chromatography, and conjugated with Alexa Fluor® 488 under optimal conditions.  
**Formulation:** Phosphate-buffered solution, pH 7.2, containing 0.09% sodium azide.  
**Concentration:** 0.5



LOU rat splenocytes stained with OX-33 Alexa Fluor® 488

**Applications:**

**Applications:** Flow Cytometry, Immunohistochemistry  
**Recommended Usage:** Each lot of this antibody is quality control tested by immunofluorescent staining with flow cytometric analysis. For flow cytometric staining, the suggested use of this reagent is ≤ 1.0 microg per 10<sup>6</sup> cells in 100 microL volume. It is recommended that the reagent be titrated for optimal performance for each application.  
 \* Alexa Fluor® 488 has a maximum emission of 519 nm when it is excited at 488 nm.  
**Application Notes:** Additional reported applications (for the relevant formats) include: immunohistochemistry of acetone-fixed frozen sections<sup>1</sup>.

**Application References:** 1. Smith T, *et al.* 2000. *Nature Med.* 6:62. (IHC)

**Description:** CD45 is a protein tyrosine phosphatase with multiple isoforms differing as a result of alternative splicing of the extracellular domain and glycosylation. CD45 is expressed on all hematopoietic cells except erythrocytes and platelets. CD45RA is one of the CD45 isoforms with a molecular weight of 200-220 kD. It is expressed almost exclusively on B cells. CD45 functions in signal transduction through T and B cell antigen receptors. CD45 has been shown to interact with various proteins, including galectin-1, CD2, CD3, and CD4.

**Antigen References:** 1. Sunderland CA, *et al.* 1979. *Eur. J. Immunol.* 9:155.  
 2. Woolett GR, *et al.* 1985. *Eur. J. Immunol.* 15:168.