

**PE anti-mouse Ly-6A/E (Sca-1)**

**Catalog # / Size:** 1404525 / 25 µg  
1404530 / 100 µg

**Clone:** W18174A

**Isotype:** Rat IgG2a, κ

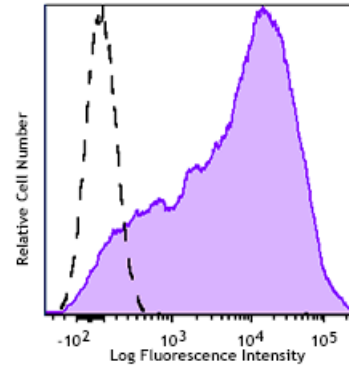
**Immunogen:** EL4 Cell

**Reactivity:** Mouse

**Preparation:** The antibody was purified by affinity chromatography and conjugated with PE under optimal conditions.

**Formulation:** Phosphate-buffered solution, pH 7.2, containing 0.09% sodium azide

**Concentration:** 0.2 mg/mL



C57BL/6 splenocytes were stained with anti-mouse Ly-6A/E (Sca-1) PE (clone W18174A) (filled histogram) or rat IgG2a, κ PE isotype control (open histogram).

**Applications:**

**Applications:** Flow Cytometry

**Recommended Usage:** Each lot of this antibody is quality control tested by immunofluorescent staining with flow cytometric analysis. For flow cytometric staining, the suggested use of this reagent is ≤ 0.5 µg per million cells in 100 µL volume. It is recommended that the reagent be titrated for optimal performance for each application.

**Application Notes:** Strains expressing the Ly-6.1 haplotype (e.g., BALB/c, CBA, C3H/He, DBA/1, and NZB) have low Ly-6A/E expression on resting peripheral lymphocytes.

**Description:** Ly-6A/E, also known as Sca-1, is an 18 kD member of the Ly-6 multigene family. Ly6A/E is a glycosylphosphatidylinositol (GPI)-linked protein expressed on hematopoietic stem cells. In mice expressing the Ly-6.2 haplotype (e.g., AKR, C57BL, C57BR, DBA/2, SJL, SWR, and 129), Ly-6A/E is also expressed on peripheral B lymphocytes and thymic and peripheral T lymphocytes. Strains expressing the Ly-6.1 haplotype (e.g., BALB/c, CBA, C3H/He, DBA/1, and NZB) have low Ly-6A/E expression on resting peripheral lymphocytes. The expression of Ly-6A/E on lymphocytes is upregulated upon activation from both Ly6.1 and Ly6.2 haplotype mice. Ly-6A/E is thought to be involved in the regulation of both T and B cell responses.

**Antigen References:** 1. Upadhyay G. 2019. *Front Immunol.* 10:819.  
2. Rock KL, et al. 1989. *Immunol. Rev.* 111:195-224.