

PE anti-mouse PD-1H (VISTA)

Catalog # / 1398015 / 25 µg
Size: 1398020 / 100 µg

Clone: A17207I

Isotype: Rat IgG2a, κ

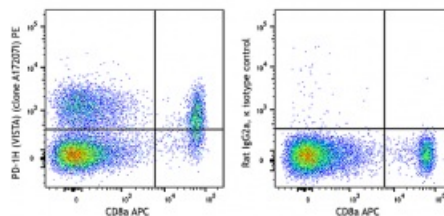
Immunogen: Recombinant mouse VISTA protein

Reactivity: Mouse

Preparation: The antibody was purified by affinity chromatography and conjugated with PE under optimal conditions.

Formulation: Phosphate-buffered solution, pH 7.2, containing 0.09% sodium azide

Concentration: 0.2 mg/mL



C57BL/6 mouse splenocytes were stained with CD8a APC and anti-mouse PD-1H (VISTA) (clone A17207I) PE (left) or rat IgG2a, κ isotype control PE (right).

Applications:

Applications: Flow Cytometry

Recommended Usage: Each lot of this antibody is quality control tested by immunofluorescent staining with flow cytometric analysis. For flow cytometric staining, the suggested use of this reagent is ≤ 1.0 µg per million cells in 100 µL volume. It is recommended that the reagent be titrated for optimal performance for each application.

Application Notes: Clone A17207I antibody is able to completely block the staining of clone MH5A antibody.

Description: PD-1H, also known as VISTA, is a 309 aa type I transmembrane protein, composed of seven exons. PD-1H has one Ig-V like domain, and its sequence is similar to the Ig-V domains of the members of CD28 and B7 families. PD-1H is expressed by a subset of T cells, macrophages, dendritic cells, neutrophils, and NK cells. It has been proposed that PD-1H can be useful to modulate the host immune response to allogeneic transplants.

Antigen References:

1. Flies DB, *et al.* 2011. *J. Immunol.* 187:1537.
2. Wang Li, *et al.* 2011. *J. Exp Med.* 208:577.