

**PE/Dazzle™ 594 anti-mouse CD16**

**Catalog # /** 1390055 / 25 µg  
**Size:** 1390060 / 100 µg

**Clone:** S17014E

**Isotype:** Rat IgG2a, κ

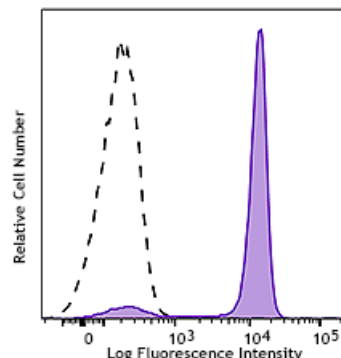
**Immunogen:** Mouse CD16 - transfected cells

**Reactivity:** Mouse

**Preparation:** The antibody was purified by affinity chromatography and conjugated with PE/Dazzle™ 594 under optimal conditions.

**Formulation:** Phosphate-buffered solution, pH 7.2, containing 0.09% sodium azide

**Concentration:** 0.2 mg/mL



C57BL/6 mouse bone marrow cells were stained with CD16 PE/Dazzle™ 594 (clone S17014E) (filled histogram) or rat IgG2a, κ PE/Dazzle™ 594 (open histogram). Data shown were gated on the myeloid cell population.

**Applications:**

**Applications:** Flow Cytometry

**Recommended Usage:** Each lot of this antibody is quality control tested by immunofluorescent staining with flow cytometric analysis. For flow cytometric staining, the suggested use of this reagent is ≤ 0.5 µg per million cells in 100 µL volume. It is recommended that the reagent be titrated for optimal performance for each application.

\* PE/Dazzle™ 594 has a maximum excitation of 566 nm and a maximum emission of 610 nm.

**Description:** CD16 also known as FcγR3 is a 50-65 kD type I transmembrane protein, member of the Fc gamma receptor family and Ig superfamily. CD16 is expressed on most myeloid cells including monocytes, macrophages, dendritic cells, and is also expressed by NK cells and NKT cells. CD16 is involved in cell activation, phagocytosis, and antibody-dependent cell-mediated cytotoxicity (ADCC); its ligands are IgG1, IgG2a and IgG2b.

**Antigen References:**

1. Nimmerjahn F1 & Ravetch JV. 2008. *Nat Rev Immunol*. 8(1):34-47.
2. Biburger M & Nimmerjahn F. 2012. *Immunol Lett*. 143(1):53-9.
3. Arase N, et al. 2003. *J Immunol*. 170:3054.