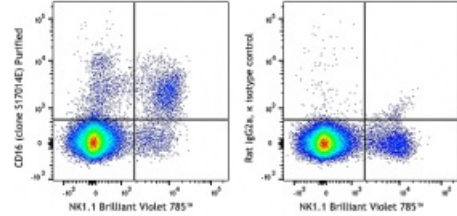


Purified anti-mouse CD16

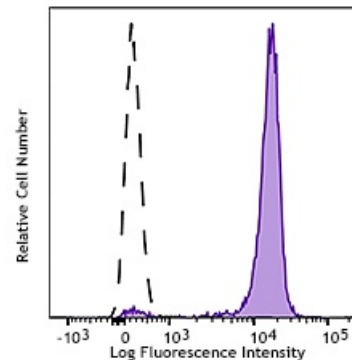
Catalog # / Size: 1390010 / 500 µg
Clone: S17014E
Isotype: Rat IgG2a, κ
Immunogen: Mouse CD16 - transfected cells
Reactivity: Mouse
Preparation: The antibody was purified by affinity chromatography.
Formulation: Phosphate-buffered solution, pH 7.2, containing 0.09% sodium azide.
Concentration: 0.5 mg/ml



C57BL/6 mouse splenocytes were stained with NK1.1 Brilliant Violet 785™ and purified CD16 (clone S17014E, left) or purified rat IgG2a, κ (right), followed by anti-rat IgG Alexa Fluor® 647.

Applications:

Applications: Flow Cytometry
Recommended Usage: Each lot of this antibody is quality control tested by immunofluorescent staining with flow cytometric analysis. For flow cytometric staining, the suggested use of this reagent is ≤ 0.25 µg per million cells in 100 µl volume. It is recommended that the reagent be titrated for optimal performance for each application.



C57BL/6 mouse bone marrow were stained with purified CD16 (clone S17014E, filled histogram) or purified rat IgG2a, κ (open histogram), followed by anti-rat IgG Alexa Fluor® 647. Data shown was gated on the myeloid cell population.

Description: CD16 also known as Fcγ3 is a 50-65 kD type I transmembrane protein, member of the Fc gamma receptor family and Ig superfamily. CD16 is expressed on most myeloid cells including monocytes, macrophages, dendritic cells, and is also expressed by NK cells and NKT cells. CD16 is involved in cell activation, phagocytosis, and antibody-dependent cell-mediated cytotoxicity (ADCC); its ligands are IgG1, IgG2a and IgG2b.

Antigen References:

1. Nimmerjahn F1 & Ravetch JV. 2008. *Nat Rev Immunol*. 8(1):34-47.
2. Biburger M & Nimmerjahn F. 2012. *Immunol Lett*. 143(1):53-9.
3. Arase N, et al. 2003. *J Immunol*. 170:3054.