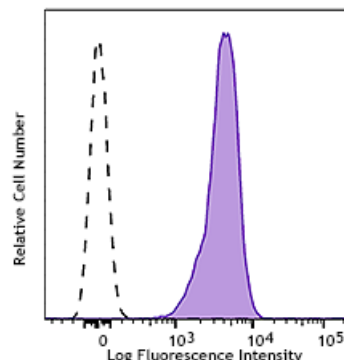


Pacific Blue™ anti-mouse CD45

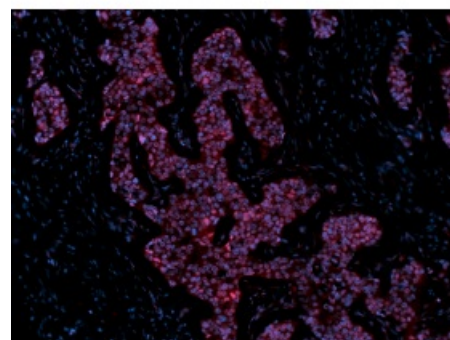
Catalog # /	1386060 / 100 µg
Size:	1386055 / 25 µg
Clone:	S18009F
Isotype:	Rat IgG2b, κ
Immunogen:	Recombinant mouse CD45
Reactivity:	Mouse
Preparation:	The antibody was purified by affinity chromatography and conjugated with Pacific Blue™ under optimal conditions.
Formulation:	Phosphate-buffered solution, pH 7.2, containing 0.09% sodium azide
Workshop Number:	V-CD28.05
Concentration:	0.5 mg/mL



C57BL/6 splenocytes were stained with CD45 (clone S18009F) Pacific Blue™ (filled histogram) or rat IgG2b, κ Pacific Blue™ isotype control (open histogram).

Applications:

Applications:	Flow Cytometry
Recommended Usage:	Each lot of this antibody is quality control tested by immunofluorescent staining with flow cytometric analysis. For flow cytometric staining, the suggested use of this reagent is ≤ 0.25 µg per million cells in 100 µL volume. It is recommended that the reagent be titrated for optimal performance for each application.



Bend.3 mouse endothelial cells were stained with CD63 (clone NVG-2) FITC (filled histogram) or rat IgG2a, κ FITC isotype control (open histogram).

Application Notes:	Clone S17016D cross-blocks anti-mouse NK1.1 clone PK136, and can stain for NK1.1 post-formaldehyde and methanol-based fixation based on in-house testing.
---------------------------	---

Application References:	1. Verjan Garcia N, <i>et al.</i> 2011. <i>J. Immunol.</i> 187:2268. (WB, IF)
--------------------------------	---

Description: CD45 is a 180-240 kD glycoprotein also known as the leukocyte common antigen (LCA), T200, or Ly-5. It is a member of the protein tyrosine phosphatase (PTP) family, expressed on all hematopoietic cells except mature erythrocytes and platelets. There are different isoforms of CD45 that arise from variable splicing of exons 4, 5, and 6, which encode A, B, and C determinants, respectively. CD45 plays a key role in TCR and BCR signal transduction. These isoforms are very specific to the activation and maturation state of the cell as well as cell type. The primary ligands for CD45 are galectin-1, CD2, CD3, CD4, TCR, CD22, and Thy-1.

Antigen 1. Barclay A, et al. 1997. *The Leukocyte Antigen FactsBook Academic Press.*
References: 2. Trowbridge IS, et al. 1994. *Annu. Rev. Immunol.* 12:85.
3. Kishihara K, et al. 1993. *Cell.* 74:143.
4. Pulido R, et al. 1988. *J. Immunol.* 140:3851.