

**PerCP/Cyanine5.5 anti-mouse CD45**

**Catalog # /** 1386035 / 25 µg  
**Size:** 1386040 / 100 µg

**Clone:** S18009F

**Isotype:** Rat IgG2b, κ

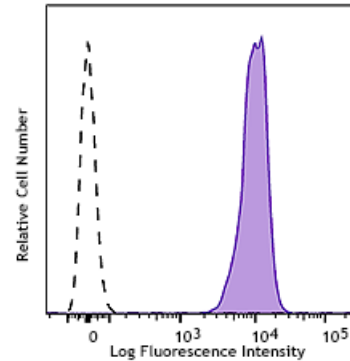
**Immunogen:** Recombinant mouse CD45

**Reactivity:** Mouse

**Preparation:** The antibody was purified by affinity chromatography and conjugated with PerCP/Cyanine5.5 under optimal conditions.

**Formulation:** Phosphate-buffered solution, pH 7.2, containing 0.09% sodium azide

**Concentration:** 0.2 mg/mL



C57BL/6 splenocytes were stained with CD45 (clone S18009F) PerCP/Cyanine5.5 (filled histogram) or rat IgG2b, κ PerCP/Cyanine5.5 isotype control (open histogram).

**Applications:**

**Applications:** Flow Cytometry

**Recommended Usage:** Each lot of this antibody is quality control tested by immunofluorescent staining with flow cytometric analysis. For flow cytometric staining, the suggested use of this reagent is  $\leq 0.25$  µg per million cells in 100 µL volume. It is recommended that the reagent be titrated for optimal performance for each application.

\* PerCP/Cyanine5.5 has a maximum absorption of 482 nm and a maximum emission of 690 nm.

**Description:** CD45 is a 180-240 kD glycoprotein also known as the leukocyte common antigen (LCA), T200, or Ly-5. It is a member of the protein tyrosine phosphatase (PTP) family, expressed on all hematopoietic cells except mature erythrocytes and platelets. There are different isoforms of CD45 that arise from variable splicing of exons 4, 5, and 6, which encode A, B, and C determinants, respectively. CD45 plays a key role in TCR and BCR signal transduction. These isoforms are very specific to the activation and maturation state of the cell as well as cell type. The primary ligands for CD45 are galectin-1, CD2, CD3, CD4, TCR, CD22, and Thy-1.

**Antigen References:**

1. Barclay A, *et al.* 1997. *The Leukocyte Antigen FactsBook Academic Press.*
2. Trowbridge IS, *et al.* 1994. *Annu. Rev. Immunol.* 12:85.
3. Kishihara K, *et al.* 1993. *Cell.* 74:143.
4. Pulido R, *et al.* 1988. *J. Immunol.* 140:3851.