

**FITC anti-mouse CD32 (Fcgr2)**

**Catalog # / Size:** 1382035 / 25 µg  
1382040 / 100 µg

**Clone:** S17012B

**Isotype:** Rat IgG2b, κ

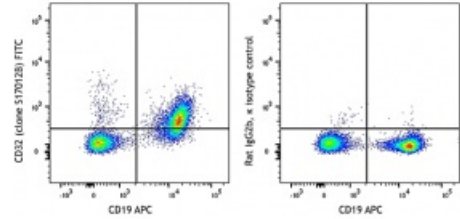
**Immunogen:** Mouse CD32 transfected cells

**Reactivity:** Mouse

**Preparation:** The antibody was purified by affinity chromatography and conjugated with FITC under optimal conditions.

**Formulation:** Phosphate-buffered solution, pH 7.2, containing 0.09% sodium azide

**Concentration:** 0.5 mg/mL



C57BL/6 mouse splenocytes were stained with anti-mouse CD19 APC and anti-mouse CD32 (Fcgr2) (clone S17012B) FITC (left) or anti-rat IgG2b, κ FITC isotype control (right).

**Applications:**

**Applications:** Flow Cytometry

**Recommended Usage:** Each lot of this antibody is quality control tested by immunofluorescent staining with flow cytometric analysis. For flow cytometric staining, the suggested use of this reagent is ≤ 1.0 µg per million cells in 100 µL volume. It is recommended that the reagent be titrated for optimal performance for each application.

**Description:** CD32 (Fcgr2) is a 40 kD transmembrane glycoprotein, member of the immunoglobulin superfamily. The extracellular region of CD32 consists of two Ig C-type domains that binds the Fc region from monomeric IgG with low affinity, but binds immune complexes efficiently. CD32 can mediate phagocytosis of immune complexes and modulate cell activation. CD32 is expressed by Macrophages, neutrophils, mast cells and B cells.

- Antigen References:**
1. Negishi-Koga T, *et al.* 2015. *Nat Commun.* 6:6637
  2. Yamada DH, *et al.* 2015. *Immunity.* 42:379
  3. Clatworthy MR, *et al.* 2014. *Nat Med.* 20:1458
  4. Li F and Ravetch JV. 2011. *Science.* 333:1030
  5. Xiang Z, *et al.* 2007. *Nat Immunol.* 8:419