

Alexa Fluor® 647 anti-mouse Podoplanin

Catalog # / Size: 1381015 / 25 µg
 1381020 / 100 µg

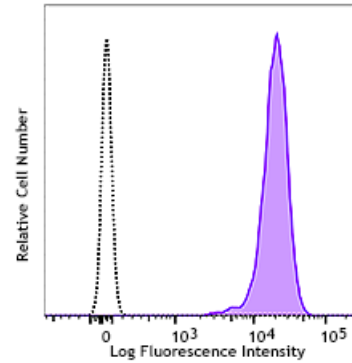
Clone: P Mab-1

Isotype: Rat IgG2a, κ

Immunogen: Peptide (38-51 amino acids of mouse podoplanin)

Reactivity: Mouse

Preparation: The antibody was purified by affinity chromatography and conjugated with Alexa Fluor® 647 under optimal conditions. The solution is free of unconjugated Alexa Fluor® 647.



Formulation: Phosphate-buffered solution, pH 7.2, containing 0.09% sodium azide.

Concentration: 0.5 mg/ml

Mouse TE-71 cell line was stained with anti-mouse podoplanin (clone P Mab-1) Alexa Fluor® 647 (filled histogram) or rat IgG2a, κ isotype control (clone RTK2758) Alexa Fluor® 647 (open histogram).

Applications:

Applications: Flow Cytometry

Recommended Usage: Each lot of this antibody is quality control tested by immunofluorescent staining with flow cytometric analysis. For flow cytometric staining, the suggested use of this reagent is ≤ 0.25 µg per million cells in 100 µl volume. It is recommended that the reagent be titrated for optimal performance for each application.

* Alexa Fluor® 647 has a maximum emission of 668 nm when it is excited at 633 nm / 635 nm.

Application References:

1. Farr A, et al. 1992. *J Histochem Cytochem.* 40:651.
2. Schacht V, et al. 2005. *Am J Pathol.* 166:913.

Description: The mucin-type glycoprotein podoplanin is thought to be involved in the development of the lymphatic vascular system. Podoplanin is named after its expression in the kidney glomerular epithelial cells (podocytes). It has a potential role in tumor progression.

Antigen References:

1. Farr A, et al. 1992. *J Histochem Cytochem.* 40:651.
2. Schacht V, et al. 2005. *Am J Pathol.* 166:913.