

**Alexa Fluor® 488 anti-mouse CD170 (Siglec-F)**

**Catalog # / Size:** 1377615 / 25 µg  
1377620 / 100 µg

**Clone:** S17007L

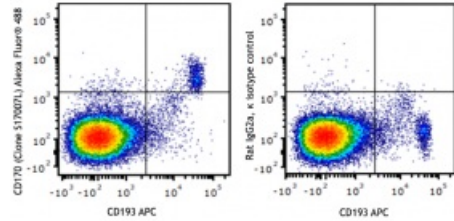
**Isotype:** Rat IgG2a, κ

**Reactivity:** Mouse

**Preparation:** The antibody was purified by affinity chromatography and conjugated with Alexa Fluor® 488 under optimal conditions.

**Formulation:** Phosphate-buffered solution, pH 7.2, containing 0.09% sodium azide

**Concentration:** 0.5 mg/mL



C57BL/6 mouse splenocytes were stained with anti-mouse CD193 (CCR3) (clone J073E5) APC and anti-mouse CD170 (Siglec-F) (clone S17007L) Alexa Fluor® 488 (left) or rat IgG2a, κ Alexa Fluor® 488 isotype control (right).

**Applications:**

**Applications:** Flow Cytometry

**Recommended Usage:** Each lot of this antibody is quality control tested by immunofluorescent staining with flow cytometric analysis. For flow cytometric staining, the suggested use of this reagent is ≤ 0.5 µg per million cells in 100 µL volume. It is recommended that the reagent be titrated for optimal performance for each application.

**Description:** CD170, also known as Siglec-F, Siglec-5, is a member of the Sialic acid-binding Ig-like lectin family, type I single pass transmembrane protein, with 4 extracellular Ig-like domains and 2 ITIM motifs in the cytoplasmic domain; preferentially binds [alpha]-2,3-linked sialic acid. Siglec F is expressed in eosinophils, alveolar macrophages and intestinal microfold (M) cells and induces apoptosis of the lung eosinophis during allergic asthma.

- Antigen References:**
1. Gicheva N, *et al.* 2016. *Biochem. Biophys. Res. Commun.* 479:1.
  2. Kiwamoto T, *et al.* 2015. *J. Allergy Clin. Immunol.* 135:1329.
  3. Suzukawa M, *et al.* 2013. *J. Immunol.* 190:5939.
  4. Patnode ML, *et al.* 2013. *J. Biol. Chem.* 288:26533.