

APC anti-mouse CD170 (Siglec-F)

Catalog # / 1377540 / 100 µg

Size: 1377535 / 25 µg

Clone: S17007L

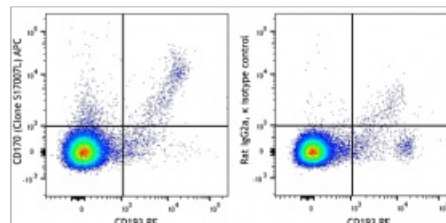
Isotype: Rat IgG2a, κ

Reactivity: Mouse

Preparation: The antibody was purified by affinity chromatography and conjugated with APC under optimal conditions. The solution is free of unconjugated APC and unconjugated antibody.

Formulation: Phosphate-buffered solution, pH 7.2, containing 0.09% sodium azide.

Concentration: 0.2 mg/ml



C57BL/6 mouse splenocytes were stained with CD193 (CCR3, clone J073E5) PE and Siglec-F (clone S17007L) APC (top) or rat IgG2a, κ APC isotype control (bottom).

Applications:

Applications: Flow Cytometry

Recommended Usage: Each lot of this antibody is quality control tested by immunofluorescent staining with flow cytometric analysis. For flow cytometric staining, the suggested use of this reagent is ≤0.25 µg per million cells in 100 µl volume. It is recommended that the reagent be titrated for optimal performance for each application.

Application References:

1. Gicheva N, *et al.* 2016. *Biochem. Biophys. Res. Commun.* 479:1.
2. Kiwamoto T, *et al.* 2015. *J. Allergy Clin. Immunol.* 135:1329.
3. Suzukawa M, *et al.* 2013. *J. Immunol.* 190:5939.

Description: CD170, also known as Siglec-F, Siglec-5, is a member of the Sialic acid-binding Ig-like lectin family, type I single pass transmembrane protein, with 4 extracellular Ig-like domains and 2 ITIM motifs in the cytoplasmic domain; preferentially binds [alpha]-2,3-linked sialic acid. Siglec F is expressed in eosinophils, alveolar macrophages and intestinal microfold (M) cells and induces apoptosis of the lung eosinophis during allergic asthma.

Antigen References:

1. Gicheva N, *et al.* 2016. *Biochem. Biophys. Res. Commun.* 479:1.
2. Kiwamoto T, *et al.* 2015. *J. Allergy Clin. Immunol.* 135:1329.
3. Suzukawa M, *et al.* 2013. *J. Immunol.* 190:5939.
4. Patnode ML, *et al.* 2013. *J. Biol. Chem.* 288:26533.