

PE anti-mouse CD19

Catalog # / Size: 1362035 / 25 µg
1362040 / 100 µg

Clone: 1D3/CD19

Isotype: Rat IgG2a, κ

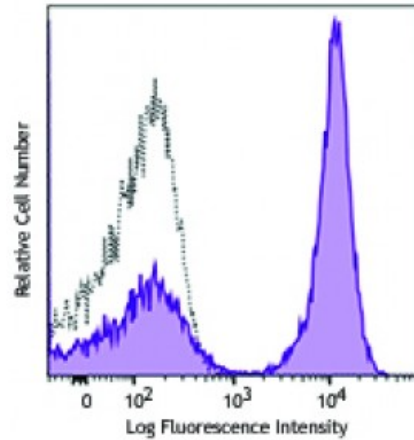
Immunogen: Transfected k562 cells expressing the extracellular domain of murine CD19.

Reactivity: Mouse

Preparation: The antibody was purified by affinity chromatography and conjugated with PE under optimal conditions. The solution is free of unconjugated PE and unconjugated antibody.

Formulation: Phosphate-buffered solution, pH 7.2, containing 0.09% sodium azide.

Concentration: 0.2



C57BL/6 mouse splenocytes were stained with CD19 (clone 1D3/CD19) PE (filled histogram) or rat IgG2a, κ PE isotype control (open histogram).

Applications:

Applications: Flow Cytometry

Recommended Usage: Each lot of this antibody is quality control tested by immunofluorescent staining with flow cytometric analysis. For flow cytometric staining, the suggested use of this reagent is ≤0.125 microg per million cells in 100 microL volume. It is recommended that the reagent be titrated for optimal performance for each application.

Application Notes: Additional reported applications (for the relevant formats) include: blocking^{1,2} and immunoprecipitation¹.

Application References: 1. Krop I, *et al.* 1996. *Eur. J. Immunol.* 26:238. (FC, Blocking, IP)
2. Abraham P, *et al.* 2014. *Clin. Exp. Immunol.* 175:181. (Blocking)

Description: CD19 is a 95 kD glycoprotein also known as B4. It is a member of the Ig superfamily, expressed on all pro-B to mature B cells (during development) and follicular dendritic cells. Plasma cells do not express CD19. CD19, in association with CD21 and CD81, forms a molecular complex integral to B cell activation.

Antigen References: 1. Fearon DT. 1993. *Curr. Opin. Immunol.* 5:341.
2. Krop I, *et al.* 1996. *Eur. J. Immunol.* 26:238.
3. Krop I, *et al.* 1996. *J. Immunol.* 157:48.
4. Tedder TF, *et al.* 1994. *Immunol. To*