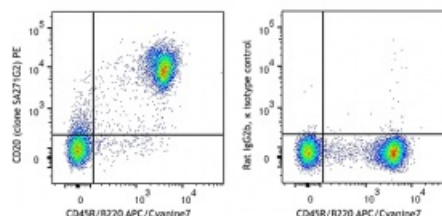


# PE anti-mouse CD20

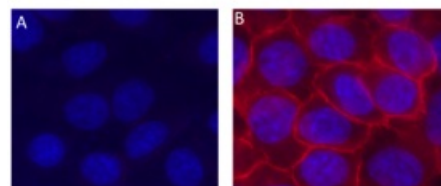
<b>Catalog # /</b>	1360530 / 100 µg
<b>Size:</b>	1360525 / 25 µg
<b>Clone:</b>	SA271G2
<b>Isotype:</b>	Rat IgG2b, κ
<b>Immunogen:</b>	Mouse CD20 transfected cells
<b>Reactivity:</b>	Mouse
<b>Preparation:</b>	The antibody was purified by affinity chromatography and conjugated with PE under optimal conditions. The solution is free of unconjugated PE and unconjugated antibody.
<b>Formulation:</b>	Phosphate-buffered solution, pH 7.2, containing 0.09% sodium azide
<b>Workshop Number:</b>	III 155
<b>Concentration:</b>	0.2 mg/mL



C57BL/6 mouse splenocytes were stained with CD45R/B220 APC/Cyanine7 and CD20 (clone SA271G2) PE (left) or rat IgG2b, κ PE isotype control (right).

## Applications:

<b>Applications:</b>	Flow Cytometry
<b>Recommended Usage:</b>	Each lot of this antibody is quality control tested by immunofluorescent staining with flow cytometric analysis. For flow cytometric staining, the suggested use of this reagent is $\leq 0.25$ µg per million cells in 100 µL volume. It is recommended that the reagent be titrated for optimal performance for each application.
<b>Application Notes:</b>	Additional reported applications (for the relevant formats of this clone) include: <i>in vitro</i> blocking activity <sup>1,2</sup> , immunoprecipitation <sup>3</sup> , and ELISA <sup>4</sup> .



A-431 cells were fixed with 4% paraformaldehyde for 10 minutes, permeabilized with ice-cold methanol for 10 minutes, and blocked with 5% FBS for 60 minutes. Cells were then intracellularly stained with 5.0 µg/mL (1:100 dilution) of either Purified Mouse IgG1, κ Isotype Ctrl Antibody (Cat. No. 2607010, panel A) or purified anti-EGFR antibody (panel B) for two hours at room temperature, followed by incubation with Alexa Fluor® 594 Goat anti-mouse IgG Antibody at 2.0 µg/mL. Nuclei were counterstained with DAPI, and the image was captured with a 60X objective.

**Application**  
**References:**

1. Hirsch MS, *et al.* 1997. *Dev. Dyn.* 210:249. (Block)
  2. Sawhney RS, *et al.* 2006. *J. Biol. Chem.* 281:8497. (Block)
  3. Lee SA, *et al.* 2009. *Carcinogenesis*. 30:1872. (IP)
  4. Zbrate S, *et al.* 2004. *J. Virol.* 78:10839. (ELISA)
- 

**Description:** CD20 is a 33-37 kD protein, a member of the MS4A family, with four transmembrane spanning regions that present as a homo-oligomeric complexes in the cell surface when associating with MHC class I and II, CD53, CD81, and CD82. CD20 is expressed on B cells and a subset of T cells, but not on plasma cells. CD20 regulates B-cell activation and proliferation. Its ligation promotes transmembrane  $\text{Ca}^{2+}$  trafficking. CD20 is an important therapeutic target in the treatment of B cell lymphomas and leukemias.

**Antigen**  
**References:**

1. Morsy DE, *et al.* 2013. *J. Immunol.* 191:3112.
2. Lund FE, Randall TD. 2010. *Nat. Rev. Immunol.* 10:236.
3. Beers SA, *et al.* 2010. *Blood* 115:5191.
4. Kuijpers TW, *et al.* 2010. *J. Clin. Invest.* 120:214.