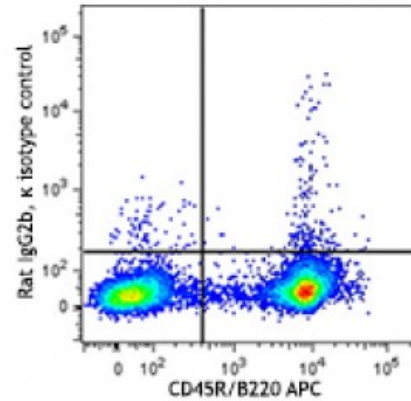


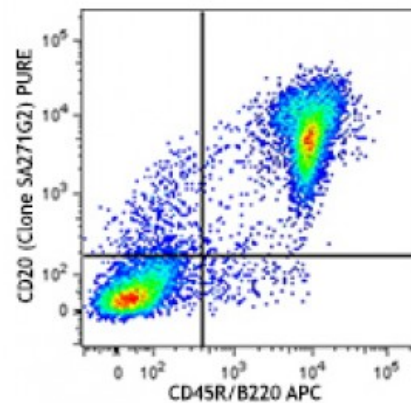
Purified anti-mouse CD20

Catalog # / Size: 1360510 / 100 µg
Clone: SA271G2
Isotype: Rat IgG2b, κ
Immunogen: Mouse CD20 transfected cells.
Reactivity: Mouse
Preparation: The antibody was purified by affinity chromatography.
Formulation: Phosphate-buffered solution, pH 7.2, containing 0.09% sodium azide.
Concentration: 0.5



Applications:

Applications: Neutralization
Recommended Usage: Each lot of this antibody is quality control tested by immunofluorescent staining with flow cytometric analysis. For flow cytometric staining, the suggested use of this reagent is ≤0.25 microg per million cells in 100 microL volume. It is recommended that the reagent be titrated for optimal performance for each application.



C57BL/6 mouse splenocytes were stained with CD45R/B220 APC and purified CD20 (clone SA271G2, top) or purified rat IgG2b, κ isotype control (bottom), followed by anti-rat IgG PE.

Description: CD20 is a 33-37 kD protein, a member of the MS4A family, with four transmembrane spanning regions that present as a homo-oligomeric complexes in the cell surface when associating with MHC class I and II, CD53, CD81, and CD82. CD20 is expressed on B cells and a subset of T cells, but not on plasma cells. CD20 regulates B-cell activation and proliferation. Its ligation promotes transmembrane Ca²⁺ trafficking. CD20 is an important therapeutic target in the treatment of B cell lymphomas and leukemias.

- Antigen References:**
1. Morsy DE, *et al.* 2013. *J. Immunol.* 191:3112.
 2. Lund FE, Randall TD. 2010. *Nat. Rev. Immunol.* 10:236.
 3. Beers SA, *et al.* 2010. *Blood* 115:5191.
 4. Kuijpers TW, *et al.* 2010. *J. C*