

**APC/Cyanine7 anti-mouse CD186 (CXCR6)**

**Catalog # / Size:** 1355615 / 25 µg

**Clone:** SA051D1

**Isotype:** Rat IgG2b, κ

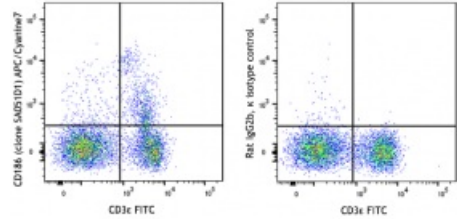
**Immunogen:** mCXCR6-transfectants

**Reactivity:** Mouse

**Preparation:** The antibody was purified by affinity chromatography and conjugated with APC/Cyanine7 under optimal conditions.

**Formulation:** Phosphate-buffered solution, pH 7.2, containing 0.09% sodium azide

**Concentration:** 0.2 mg/mL



C57BL/6 mouse splenocytes were stained with CD3ε FITC and anti-mouse CD186 (CXCR6) (clone SA051D1) APC/Cyanine7 (left) or rat IgG2b, κ APC/Cyanine7 isotype control (right).

**Applications:**

**Applications:** Flow Cytometry

**Recommended Usage:** Each lot of this antibody is quality control tested by immunofluorescent staining with flow cytometric analysis. For flow cytometric staining, the suggested use of this reagent is ≤ 0.5 µg per million cells in 100 µL volume. It is recommended that the reagent be titrated for optimal performance for each application.

**Description:** CD186, or CXCR6, is a 39 kD G-protein coupled chemokine receptor with seven transmembrane-spanning regions. Its ligand is CXCL16. It is expressed on different T cell subsets and is upregulated in activated T cells. Expression of CXCR6 is correlated with increased inflammatory responses and seems to contribute to liver fibrosis.

- Antigen References:**
1. Kim CH, *et al.* 2001. *J. Clin. Invest.* 107:595.
  2. Heesch K, *et al.* 2014. *PLoS One.* 9:5.
  3. Wehr A, *et al.* 2013. *J. Immunol.* 190:5226.