

FITC anti-mouse CD186 (CXCR6)

Catalog # / Size: 1355535 / 25 µg
1355540 / 100 µg

Clone: SA051D1

Isotype: Rat IgG2b, κ

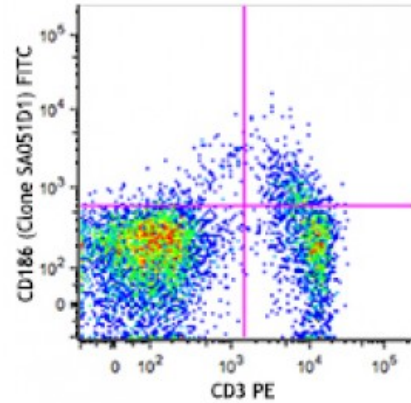
Immunogen: mCXCR6-transfectants

Reactivity: Mouse

Preparation: The antibody was purified by affinity chromatography and conjugated with FITC under optimal conditions. The solution is free of unconjugated FITC and unconjugated antibody.

Formulation: Phosphate-buffered solution, pH 7.2, containing 0.09% sodium azide.

Concentration: Lot-specific

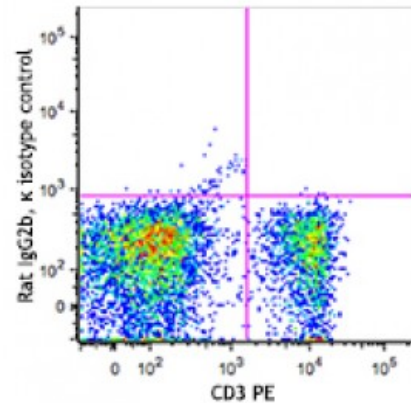


C57BL/6 mouse splenocytes were stained with CD3 PE and CD186 (clone SA051D1) FITC (top) or rat IgG2b, κ FITC isotype control (bottom).

Applications:

Applications: Flow Cytometry

Recommended Usage: Each lot of this antibody is quality control tested by immunofluorescent staining with flow cytometric analysis. For flow cytometric staining, the suggested use of this reagent is ≤1.0 microg per million cells in 100 microL volume. It is recommended that the reagent be titrated for optimal performance for each application.



Description: CD186, or CXCR6, is a 39 kD G-protein coupled chemokine receptor with seven transmembrane-spanning regions. Its ligand is CXCL16. It is expressed on different T cell subsets and is upregulated in activated T cells. Expression of CXCR6 is correlated with increased inflammatory responses and seems to contribute to liver fibrosis.

Antigen References:

1. Kim CH, *et al.* 2001. *J. Clin. Invest.* 107:595.
2. Heesch K, *et al.* 2014. *PLoS One.* 9:5.
3. Wehr A, *et al.* 2013. *J. Immunol.* 190:5226.