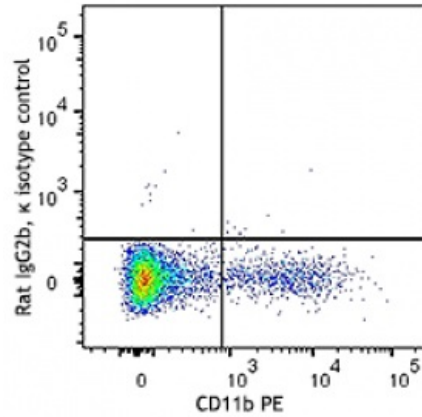


Brilliant Violet 605™ anti-mouse CD192 (CCR2)

Catalog # / Size: 1353075 / 50 µg
Clone: SA203G11
Isotype: Rat IgG2b, κ
Immunogen: Mouse CCR2 transfectants.
Reactivity: Mouse
Preparation: The antibody was purified by affinity chromatography and conjugated with Brilliant Violet 605™ under optimal conditions. The solution is free of unconjugated Brilliant Violet 605™ and unconjugated antibody.
Formulation: Phosphate-buffered solution, pH 7.2, containing 0.09% sodium azide and BSA (origin USA).
Concentration: 0.2 mg/ml



Applications:

Applications: Flow Cytometry
Recommended Usage: Each lot of this antibody is quality control tested by immunofluorescent staining with flow cytometric analysis. For flow cytometric staining, the suggested use of this reagent is ≤0.75 µg per million cells in 100 µl volume. It is recommended that the reagent be titrated for optimal performance for each application.

Brilliant Violet 605™ excites at 405 nm and emits at 603 nm. The bandpass filter 610/20 nm is recommended for detection, although filter optimization may be required depending on other fluorophores used. Be sure to verify that your cytometer configuration and software setup are appropriate for detecting this channel. Refer to your instrument manual or manufacturer for support. Brilliant Violet 605™ is a trademark of Sirigen Group Ltd.

This product is subject to proprietary rights of Sirigen Inc. and is made and sold under license from Sirigen Inc. The purchase of this product conveys to the buyer a non-transferable right to use the purchased product for research purposes only. This product may not be resold or incorporated in any manner into another product for resale. Any use for therapeutics or diagnostics is strictly prohibited. This product is covered by U.S. Patent(s), pending patent applications and foreign equivalents.

Application References:
 1. Mack M, *et al.* 2001. *J. Immunol.* 166:4697.
 2. Dutta P, *et al.* 2015. *Cell Stem Cell.* 16:477.
 3. Li L, *et al.* 2008. *Kidney Int.* 74:1526.

Description: CD192, also known as CCR2, is a 42 kD G-protein coupled receptor that is associated with bone marrow homeostasis. Specifically, CD192 mediates monocyte chemotaxis and acts as a receptor for monocyte chemoattractant protein 1 (MCP-1). CD192 is primarily expressed on monocytes and macrophages, with some expression on basophils. It is involved in monocyte infiltration in inflammatory diseases such as rheumatoid arthritis and cancer.

- Antigen** 1. Mack M, *et al.* 2001. *J. Immunol.* 166:4697.
- References:** 2. Dutta P, *et al.* 2015. *Cell Stem Cell.* 16:477.
3. Li L, *et al.* 2008. *Kidney Int.* 74:1526.