

**PE anti-mouse CD192 (CCR2)**

**Catalog # / Size:** 1353045 / 25 µg  
1353050 / 100 µg

**Clone:** SA203G11

**Isotype:** Rat IgG2b, κ

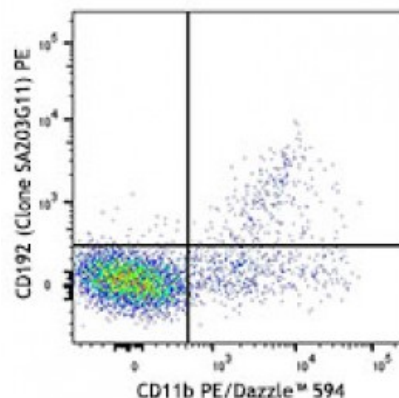
**Immunogen:** Mouse CCR2 transfectants.

**Reactivity:** Mouse

**Preparation:** The antibody was purified by affinity chromatography and conjugated with PE under optimal conditions. The solution is free of unconjugated PE and unconjugated antibody.

**Formulation:** Phosphate-buffered solution, pH 7.2, containing 0.09% sodium azide.

**Concentration:** 0.5

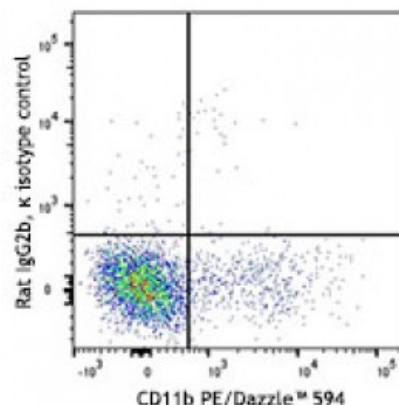


C57BL/6 bone marrow was stained with Ly-6G APC, CD11b PE/Dazzle™ 594, and CD192 (clone SA203G11) PE (top) or rat IgG2b, κ PE isotype control (bottom). Dot plots are gated on Ly-6G<sup>+</sup> cells.

**Applications:**

**Applications:** Flow Cytometry

**Recommended Usage:** Each lot of this antibody is quality control tested by immunofluorescent staining with flow cytometric analysis. For flow cytometric staining, the suggested use of this reagent is ≤0.5 microg per million cells in 100 microL volume. It is recommended that the reagent be titrated for optimal performance for each application.



**Description:** CD192, also known as CCR2, is a 42 kD G-protein coupled receptor that is associated with bone marrow homeostasis. Specifically, CD192 mediates monocyte chemotaxis and acts as a receptor for monocyte chemoattractant protein 1 (MCP-1). CD192 is primarily expressed on monocytes and macrophages, with some expression on basophils. It is involved in monocyte infiltration in inflammatory diseases such as rheumatoid arthritis and cancer.

**Antigen References:**

1. Mack M, *et al.* 2001. *J. Immunol.* 166:4697.
2. Dutta P, *et al.* 2015. *Cell Stem Cell.* 16:477.
3. Li L, *et al.* 2008. *Kidney Int.* 74:1526.