

Alexa Fluor® 647 anti-mouse CD192 (CCR2)

Catalog # / Size: 1353020 / 100 µg
1353015 / 25 µg

Clone: SA203G11

Isotype: Rat IgG2b, κ

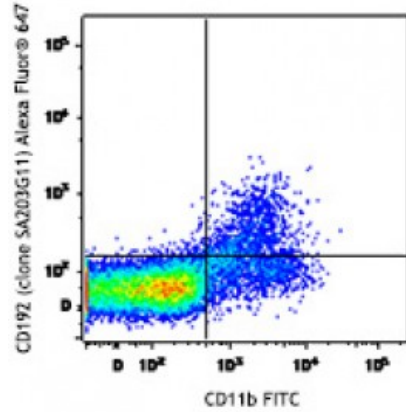
Immunogen: Mouse CCR2 transfectants.

Reactivity: Mouse

Preparation: The antibody was purified by affinity chromatography and conjugated with Alexa Fluor® 647 under optimal conditions.

Formulation: Phosphate-buffered solution, pH 7.2, containing 0.09% sodium azide.

Concentration: 0.5

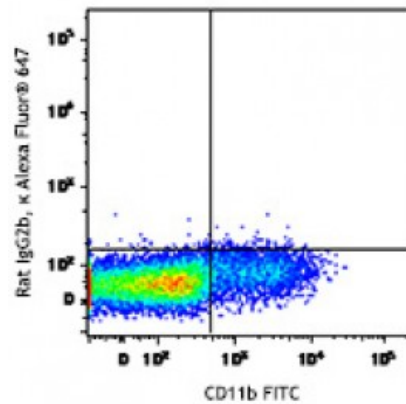


C57BL/6 bone marrow was stained with Ly-6G PE, CD11b FITC, and CD192 (clone SA203G11) Alexa Fluor® 647 (top image) or rat IgG2b, κ Alexa Fluor® 647 isotype control (bottom image). Dot plots are gated on Ly-6G⁻ cells.

Applications:

Applications: Flow Cytometry

Recommended Usage: Each lot of this antibody is quality control tested by immunofluorescent staining with flow cytometric analysis. For flow cytometric staining, the suggested use of this reagent is ≤1.0 microg per million cells in 100 microL volume. It is recommended that the reagent be titrated for optimal performance for each application.



* Alexa Fluor® 647 has a maximum emission of 668 nm when it is excited at 633 nm / 635 nm.

Description: CD192, also known as CCR2, is a 42 kD G-protein coupled receptor that is associated with bone marrow homeostasis. Specifically, CD192 mediates monocyte chemotaxis and acts as a receptor for monocyte chemoattractant protein 1 (MCP-1). CD192 is primarily expressed on monocytes and macrophages, with some expression on basophils. It is involved in monocyte infiltration in inflammatory diseases such as rheumatoid arthritis and cancer.

Antigen References:

1. Mack M, *et al.* 2001. *J. Immunol.* 166:4697.
2. Dutta P, *et al.* 2015. *Cell Stem Cell.* 16:477.
3. Li L, *et al.* 2008. *Kidney Int.* 74:1526.