

PE anti-mouse Slc7a1 (Cat-1, ERR)

Catalog # / Size: 1352520 / 100 µg
1352515 / 25 µg

Clone: SA191A10

Isotype: Rat IgG2a, κ

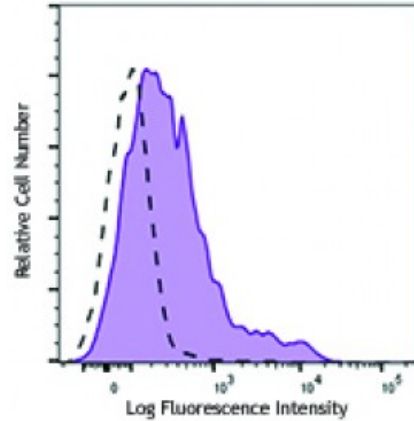
Immunogen: Mouse mCat-1 transfectants.

Reactivity: Mouse

Preparation: The antibody was purified by affinity chromatography and conjugated with PE under optimal conditions. The solution is free of unconjugated PE and unconjugated antibody.

Formulation: Phosphate-buffered solution, pH 7.2, containing 0.09% sodium azide.

Concentration: 0.2



PMA/Ionomycin stimulated C57BL/6 mouse splenocytes were stained with Slc7a1 (clone SA191A10) PE (filled histogram) or rat IgG2a, κ PE isotype control (open histogram).

Applications:

Applications: Flow Cytometry

Recommended Usage: Each lot of this antibody is quality control tested by immunofluorescent staining with flow cytometric analysis. For flow cytometric staining, the suggested use of this reagent is ≤1.0 microg per million cells in 100 microL volume. It is recommended that the reagent be titrated for optimal performance for each application.

Description: Slc7a1, also known as Cat-1, is a 63 kD receptor that is associated with the transport of cationic amino acids. Slc7a1 is targeted for gene transduction in mouse cells using retroviral vectors. Slc7a1 is found in most cell types, but is not expressed in hepatic cells.

- Antigen**
- References:**
1. Wang X, *et al.* 2014. *Biol. Reprod.* 91:59.
 2. Vina-Vilaseca A, *et al.* 2011. *J. Biol. Chem.* 10:8697.
 3. Albritton LM, *et al.* 1989. *Cell* 57:659.
 4. Kim JW, *et al.* 1991. *N*