

Brilliant Violet 605™ anti-mouse CD20

Catalog # / Size: 1352175 / 50 µg

Clone: SA275A11

Isotype: Rat IgG2b, κ

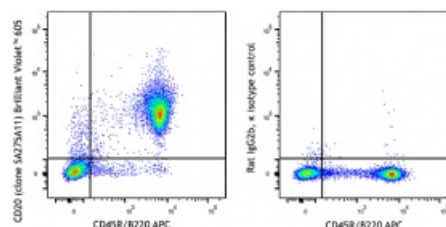
Immunogen: Mouse CD20 - transfected cells

Reactivity: Mouse

Preparation: The antibody was purified by affinity chromatography and conjugated with Brilliant Violet 605™ under optimal conditions.

Formulation: Phosphate-buffered solution, pH 7.2, containing 0.09% sodium azide and BSA (origin USA)

Concentration: 0.2 mg/mL



C57BL/6 mouse splenocytes were stained with anti-mouse/human CD45R/B220 APC and anti-mouse CD20 (clone SA275A11) Brilliant Violet™ 605 (left) or rat IgG2b, κ Brilliant Violet™ 605 isotype control (right).

Applications:

Applications: Flow Cytometry

Recommended Usage: Each lot of this antibody is quality control tested by immunofluorescent staining with flow cytometric analysis. For flow cytometric staining, the suggested use of this reagent is ≤ 0.5 µg per million cells in 100 µL volume. It is recommended that the reagent be titrated for optimal performance for each application.

Brilliant Violet 605™ excites at 405 nm and emits at 603 nm. The bandpass filter 610/20 nm is recommended for detection, although filter optimization may be required depending on other fluorophores used. Be sure to verify that your cytometer configuration and software setup are appropriate for detecting this channel. Refer to your instrument manual or manufacturer for support. Brilliant Violet 605™ is a trademark of Sirigen Group Ltd.

This product is subject to proprietary rights of Sirigen Inc. and is made and sold under license from Sirigen Inc. The purchase of this product conveys to the buyer a non-transferable right to use the purchased product for research purposes only. This product may not be resold or incorporated in any manner into another product for resale. Any use for therapeutics or diagnostics is strictly prohibited. This product is covered by U.S. Patent(s), pending patent applications and foreign equivalents.

Description: CD20 is a 33-37 kD protein, a member of the MS4A family, with four transmembrane spanning regions that present as a homo-oligomeric complexes in the cell surface when associating with MHC class I and II, CD53, CD81, and CD82. CD20 is expressed on B cells and a subset of T cells, but not on plasma cells. CD20 regulates B-cell activation and proliferation. Its ligation promotes transmembrane Ca^{2+} trafficking. CD20 is an important therapeutic target in the treatment of B cell lymphomas and leukemias.

Antigen
References:

1. Morsy DE, *et al.* 2013. *J Immunol.* 191:3112.
2. Lund FE, Randall TD. 2010. *Nat Rev Immunol.* 10:236.
3. Beers SA, *et al.* 2010. *Blood.* 115:5191.
4. Kuijpers TW, *et al.* 2010. *J Clin Invest.* 120:214.