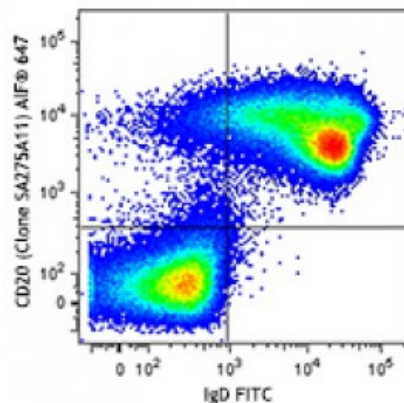


Alexa Fluor® 647 anti-mouse CD20

Catalog # / Size:	1352020 / 100 µg 1352015 / 25 µg
Clone:	SA275A11
Isotype:	Rat IgG2b, κ
Immunogen:	Mouse CD20 - transfected cells
Reactivity:	Mouse
Preparation:	The antibody was purified by affinity chromatography and conjugated with Alexa Fluor® 647 under optimal conditions.
Formulation:	Phosphate-buffered solution, pH 7.2, containing 0.09% sodium azide.
Concentration:	0.5

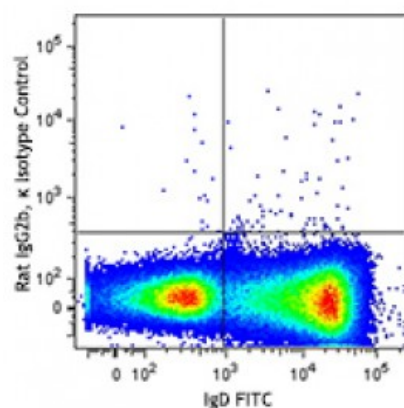


C57BL/6 mouse splenocytes were stained with IgD FITC and CD20 (clone SA275A11) Alexa Fluor® 647 (top) or rat IgG2b, κ Alexa Fluor®, 647 isotype control (bottom).

Applications:

Applications:	Flow Cytometry
Recommended Usage:	Each lot of this antibody is quality control tested by immunofluorescent staining with flow cytometric analysis. For flow cytometric staining, the suggested use of this reagent is ≤0.25 microg per million cells in 100 microL volume. For immunohistochemical staining of frozen sections, the suggested use of this reagent is 2.5-10 microg/mL. It is recommended that the reagent be titrated for optimal performance for each application.

* Alexa Fluor® 647 has a maximum emission of 668 nm when it is excited at 633 nm / 635 nm.



Description: CD20 is a 33-37 kD protein, a member of the MS4A family, with four transmembrane spanning regions that present as a homo-oligomeric complexes in the cell surface when associating with MHC class I and II, CD53, CD81, and CD82. CD20 is expressed on B cells and a subset of T cells, but not on plasma cells. CD20 regulates B-cell activation and proliferation. Its ligation promotes transmembrane Ca²⁺ trafficking. CD20 is an important therapeutic target in the treatment of B cell lymphomas and leukemias.

- Antigen References:**
1. Morsy DE, *et al.* 2013. *J. Immunol.* 191:3112.
 2. Lund FE, Randall TD. 2010. *Nat. Rev. Immunol.* 10:236.
 3. Beers SA, *et al.* 2010. *Blood* 115:5191.
 4. Kuijpers TW, *et al.* 2010. *J.*