

Alexa Fluor® 488 anti-mouse CD198 (CCR8)

Catalog # / Size: 1351625 / 25 µg

Clone: SA214G2

Isotype: Rat IgG2b, κ

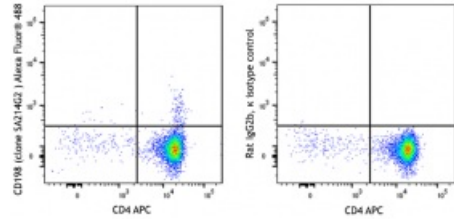
Immunogen: Mouse CD198 (CCR8)-transfected cells

Reactivity: Mouse

Preparation: The antibody was purified by affinity chromatography and conjugated with Alexa Fluor® 488 under optimal conditions.

Formulation: Phosphate-buffered solution, pH 7.2, containing 0.09% sodium azide

Concentration: 0.5 mg/mL



C57BL/6 mouse thymocytes were stained with CD4 APC and anti-mouse CD198 (CCR8) (clone SA214G2) Alexa Fluor® 488 (left) or rat IgG2b, κ Alexa Fluor® 488 isotype control (right).

Applications:

Applications: Flow Cytometry

Recommended Usage: Each lot of this antibody is quality control tested by immunofluorescent staining with flow cytometric analysis. For flow cytometric staining, the suggested use of this reagent is ≤ 2.0 µg per million cells in 100 µL volume. It is recommended that the reagent be titrated for optimal performance for each application.

* Alexa Fluor® 488 has a maximum emission of 519 nm when it is excited at 488 nm.

Description: C-C chemokine receptor type 8 (CCR8) CD198, is a 41 kD G-protein coupled receptor with 7 transmembrane regions. CCR8 is expressed by a subset of thymocytes, Tregs, NKT and Th2-polarized cells, a subset of macrophages, monocytes, and monocyte-derived dendritic cells. CCR8 mediates chemotaxis toward its ligand CCL1, and is involved in apoptosis of thymocytes.

- Antigen References:**
1. Coghill JM, *et al.* 2013. *Blood.* 122:825.
 2. Islam SA, *et al.* 2011. *Nat. Immunol.* 12:167.
 3. Hoshino A, *et al.* 2007. *J. Immunol.* 178:5296.
 3. Qu C, *et al.* 2004. *J. Exp. Med.* 200:1231.