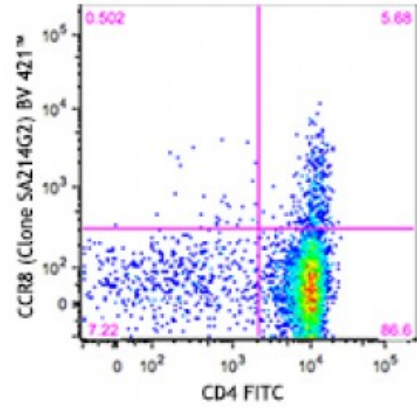


Brilliant Violet 421™ anti-mouse CD198 (CCR8)

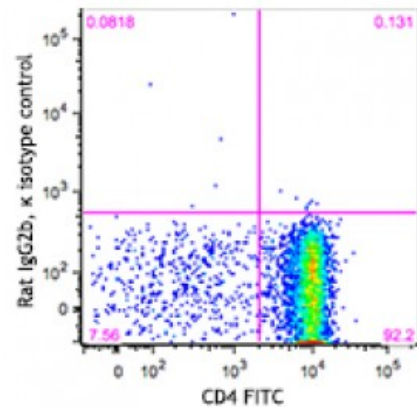
Catalog # / Size: 1351525 / 50 µg
Clone: SA214G2
Isotype: Rat IgG2b, κ
Immunogen: Mouse CCR8-transfected cells
Reactivity: Mouse
Preparation: The antibody was purified by affinity chromatography and conjugated with Brilliant Violet 421™ under optimal conditions. The solution is free of unconjugated Brilliant Violet 421™ and unconjugated antibody.
Formulation: Phosphate-buffered solution, pH 7.2, containing 0.09% sodium azide and BSA (origin USA).
Concentration: Lot-specific



C57BL/6 mouse thymocytes were stained with CD4 FITC and CCR8 (clone SA214G2) Brilliant Violet 421™ (top) or rat IgG2b, κ Brilliant Violet 421™ isotype control (bottom).

Applications:

Applications: Flow Cytometry
Recommended Usage: Each lot of this antibody is quality control tested by immunofluorescent staining with flow cytometric analysis. For flow cytometric staining, the suggested use of this reagent is ≤0.06 microg per million cells in 100 microL volume. It is recommended that the reagent be titrated for optimal performance for each application.



Description: C-C chemokine receptor type 8 (CCR8) is a 41 kD G-protein coupled receptor with 7 transmembrane regions. CCR8 is expressed by a subset of thymocytes, Tregs, NKT and Th2-polarized cells, a subset of macrophages, monocytes, and monocyte-derived dendritic cells. CCR8 mediates chemotaxis toward its ligand CCL1, and is involved in apoptosis of thymocytes.

- Antigen**
References:
1. Coghill JM, *et al.* 2013. *Blood*. 122:825.
 2. Islam SA, *et al.* 2011. *Nat. Immunol.* 12:167.
 3. Hoshino A, *et al.* 2007. *J. Immunol.* 178:5296.
 3. Qu C, *et al.* 2004. *J. E*