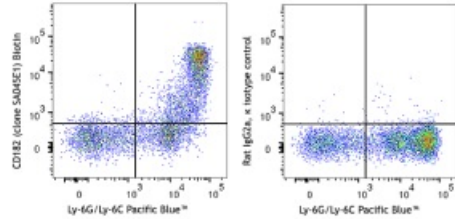


Biotin anti-mouse CD182 (CXCR2)

Catalog # / Size: 1348100 / 100 µg
Clone: SA045E1
Isotype: Rat IgG2a, κ
Immunogen: Mouse CXCR2-transfected cells.
Reactivity: Mouse
Preparation: The antibody was purified by affinity chromatography and conjugated with biotin under optimal conditions.
Formulation: Phosphate-buffered solution, pH 7.2, containing 0.09% sodium azide
Concentration: 0.5 mg/mL



C57BL/6 mouse bone marrow cells were stained with Ly-6G/Ly-6C Pacific Blue™ and anti-mouse CD182 (CXCR2) biotin (clone SA045E1) (left) or rat IgG2a, κ isotype control (right), followed by streptavidin PE.

Applications:

Applications: Flow Cytometry
Recommended Usage: Each lot of this antibody is quality control tested by immunofluorescent staining with flow cytometric analysis. For flow cytometric staining, the suggested use of this reagent is ≤ 0.5 µg per million cells in 100 µL volume. It is recommended that the reagent be titrated for optimal performance for each application.

Description: CD182, also known as CXCR2, is a G-protein coupled receptor with seven transmembrane regions that is involved in chemotaxis, neutrophil activation, and angiogenesis. CXCR2 is expressed by neutrophils, basophils, a subset of T cells, monocytes, macrophages, natural killer (NK) and natural killer T cells (NKT). Its ligands are CXCL1, CXCL2, CXCL3, and CXCL5.

- Antigen References:**
1. Spaan AN, *et al.* 2014. *Nat. Commun.* 5:5438.
 2. Natsuaki Y, *et al.* 2014. *Nat. Immunol.* 15:1064.
 3. Hsieh CY, *et al.* 2014. *J. Immunol.* 193:3693.
 4. Diana J and Lehuen A. 2014. *EMBO Mol. Med.* 6:1090.
 5. Stoolman JS, *et al.* 2014. *J. Immunol.* 193:564.