

FITC anti-mouse CD182 (CXCR2)

Catalog # / Size: 1348035 / 25 µg
1348040 / 100 µg

Clone: SA045E1

Isotype: Rat IgG2a, κ

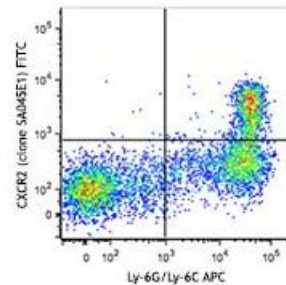
Immunogen: Mouse CXCR2-transfected cells.

Reactivity: Mouse

Preparation: The antibody was purified by affinity chromatography and conjugated with FITC under optimal conditions. The solution is free of unconjugated FITC and unconjugated antibody.

Formulation: Phosphate-buffered solution, pH 7.2, containing 0.09% sodium azide.

Concentration: 0.5

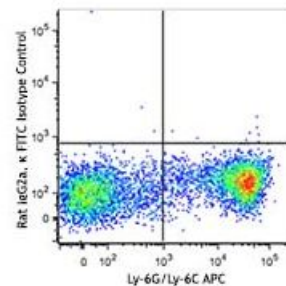


C57BL/6 mouse bone marrow cells were stained with Ly-6G/Ly-6C APC and CXCR2 (clone SA045E1) FITC (top) or rat IgG2a, κ FITC isotype control (bottom).

Applications:

Applications: Flow Cytometry

Recommended Usage: Each lot of this antibody is quality control tested by immunofluorescent staining with flow cytometric analysis. For flow cytometric staining, the suggested use of this reagent is ≤1.0 microg per million cells in 100 microl volume. It is recommended that the reagent be titrated for optimal performance for each application.



Description: CD182, also known as CXCR2, is a G-protein coupled receptor with seven transmembrane regions that is involved in chemotaxis, neutrophil activation, and angiogenesis. CXCR2 is expressed by neutrophils, basophils, a subset of T cells, monocytes, macrophages, natural killer (NK) and natural killer T cells (NKT). Its ligands are CXCL1, CXCL2, CXCL3, and CXCL5.

- Antigen References:**
1. Spaan AN, *et al.* 2014. *Nat. Commun.* 5:5438.
 2. Natsuaki Y, *et al.* 2014. *Nat. Immunol.* 15:1064.
 3. Hsieh CY, *et al.* 2014. *J. Immunol.* 193:3693.
 4. Diana J and Lehuen A. 2014. *EM*