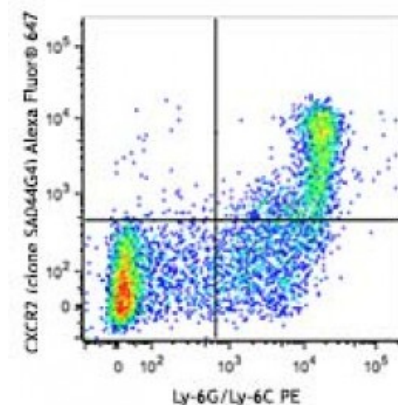


Alexa Fluor® 647 anti-mouse CD182 (CXCR2)

Catalog # / Size:	1346530 / 100 µg 1346525 / 25 µg
Clone:	SA044G4
Isotype:	Rat IgG2a, κ
Immunogen:	Mouse CXCR2-transfected cells.
Reactivity:	Mouse
Preparation:	The antibody was purified by affinity chromatography and conjugated with Alexa Fluor® 647 under optimal conditions.
Formulation:	Phosphate-buffered solution, pH 7.2, containing 0.09% sodium azide.
Concentration:	0.5

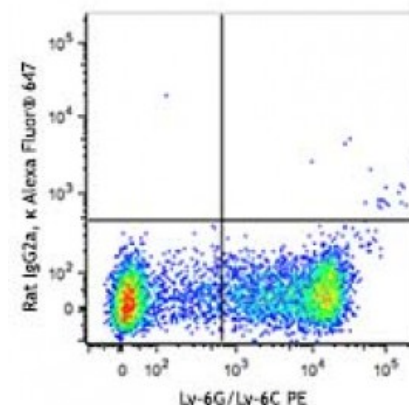


C57BL/6 mouse bone marrow cells were stained with Ly-6G/Ly-6C PE and CXCR2 (clone SA044G4) Alexa Fluor® 647 (top) or rat IgG2a, κ Alexa Fluor® 647 isotype control (bottom).

Applications:

Applications:	Flow Cytometry
Recommended Usage:	Each lot of this antibody is quality control tested by immunofluorescent staining with flow cytometric analysis. For flow cytometric staining, the suggested use of this reagent is ≤1.0 microg per million cells in 100 microL volume. It is recommended that the reagent be titrated for optimal performance for each application.

* Alexa Fluor® 647 has a maximum emission of 668 nm when it is excited at 633 nm / 635 nm.



Description:	CD182, also known as CXCR2, is a G-protein coupled receptor with 7 transmembrane regions that is involved in chemotaxis, neutrophil activation and angiogenesis. CXCR2 is expressed by neutrophils, basophils, subset of T cells, monocytes, macrophages, NK and NKT cells. Its ligands are CXCL1, CXCL2, CXCL3 and CXCL5.
Antigen References:	<ol style="list-style-type: none"> 1. Spaan AN, <i>et al.</i> 2014. <i>Nat. Commun.</i> 5:5438. 2. Natsuaki Y, <i>et al.</i> 2014. <i>Nat. Immunol.</i> 11:1064. 3. Hsieh CY, <i>et al.</i> 2014. <i>J. Immunol.</i> 193:3693. 4. Diana J, and Lehuen A. 2014. <i>E</i>