

**PE anti-mouse CD182 (CXCR2)**

**Catalog # / Size:** 1346515 / 25 µg  
1346520 / 100 µg

**Clone:** SA044G4

**Isotype:** Rat IgG2a, κ

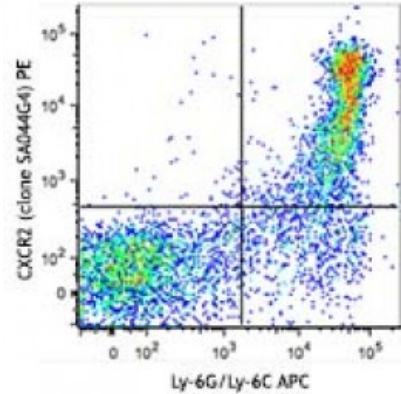
**Immunogen:** Mouse CXCR2-transfected cells.

**Reactivity:** Mouse

**Preparation:** The antibody was purified by affinity chromatography and conjugated with PE under optimal conditions. The solution is free of unconjugated PE and unconjugated antibody.

**Formulation:** Phosphate-buffered solution, pH 7.2, containing 0.09% sodium azide.

**Concentration:** 0.5

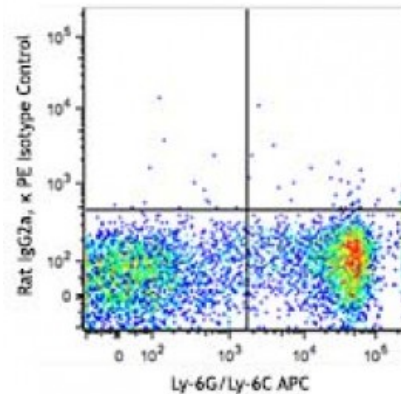


C57BL/6 mouse bone marrow cells were stained with Ly-6G/Ly-6C APC and CXCR2 (clone SA044G4) PE (top) or rat IgG2a, κ PE isotype control (bottom).

**Applications:**

**Applications:** Flow Cytometry

**Recommended Usage:** Each lot of this antibody is quality control tested by immunofluorescent staining with flow cytometric analysis. For flow cytometric staining, the suggested use of this reagent is ≤1.0 microg per million cells in 100 microL volume. It is recommended that the reagent be titrated for optimal performance for each application.



**Description:** CD182, also known as CXCR2, is a G-protein coupled receptor with 7 transmembrane regions that is involved in chemotaxis, neutrophil activation and angiogenesis. CXCR2 is expressed by neutrophils, basophils, subset of T cells, monocytes, macrophages, NK and NKT cells. Its ligands are CXCL1, CXCL2, CXCL3 and CXCL5.

**Antigen References:**

1. Spaan AN, *et al.* 2014. *Nat. Commun.* 5:5438.
2. Natsuaki Y, *et al.* 2014. *Nat. Immunol.* 11:1064.
3. Hsieh CY, *et al.* 2014. *J. Immunol.* 193:3693.
4. Diana J, and Lehuen A. 2014. *E*