

Alexa Fluor® 700 anti-mouse CX3CR1

Catalog # / Size: 1345180 / 100 µg
1345175 / 25 µg

Clone: SA011F11

Isotype: Mouse IgG2a, κ

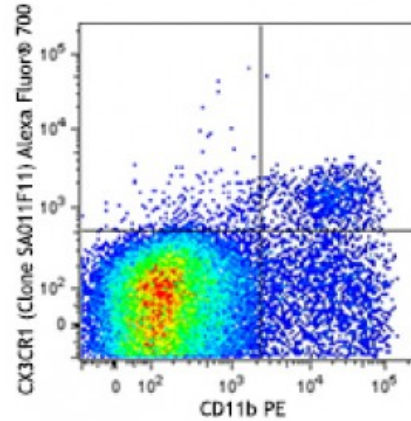
Immunogen: Mouse CX3CR1-transfected cells

Reactivity: Mouse

Preparation: The antibody was purified by affinity chromatography and conjugated with Alexa Fluor® 700 under optimal conditions.

Formulation: Phosphate-buffered solution, pH 7.2, containing 0.09% sodium azide.

Concentration: 0.5



C57BL/6 mouse splenocytes were stained with CD11b PE and CX3CR1 (clone SA011F11) Alexa Fluor® 700 (top) or mouse IgG2a, κ Alexa Fluor® 700 isotype control (bottom).

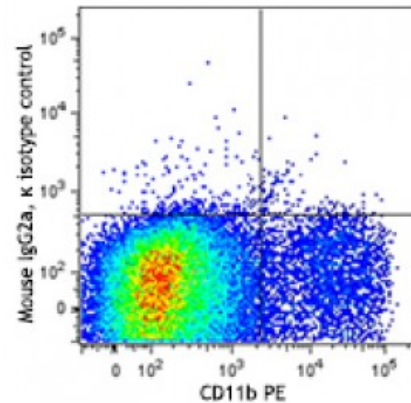
Applications:

Applications: Flow Cytometry

Recommended Usage: Each lot of this antibody is quality control tested by immunofluorescent staining with flow cytometric analysis. For flow cytometric staining, the suggested use of this reagent is ≤0.25 microg per million cells in 100 microL volume. It is recommended that the reagent be titrated for optimal performance for each application.

* Alexa Fluor® 700 has a maximum emission of 719 nm when it is excited at 633 nm / 635 nm. Prior to using Alexa Fluor® 700 conjugate for flow cytometric analysis, please verify your flow cytometer's capability of exciting and detecting the fluorochrome.

Application Notes: For *in vivo* studies or highly sensitive assays, we recommend Ultra-LEAF™ purified antibody (Cat. No. 149011) with a lower endotoxin limit than standard LEAF™ purified antibodies (Endotoxin <0.01 EU/microg).



Description: CX3CR1 is a 40 kD, G-protein coupled receptor, with seven transmembrane regions. CX3CR1 is expressed by resident and alternatively activated macrophages (M2), a subset of monocytes, dendritic cells (DCs), NK cells, a subset of memory T cells, and mast cells. CX3CR1 is involved in cell recruitment during inflammation and participates in cell adhesion and extravasation from

blood vessels. Its ligand is CX3CL1, also known as fractalkine or neurotactin. CX3CR1 is also a coreceptor for HIV1 and variations in this gene leads to increased susceptibility to HIV. In the brain, it is expressed by glial cells, which interact with CX3CL1 expressed by neurons.

Antigen
References:

1. Ponzetta A, *et al.* 2013. *J. Immunol.* 191:5684.
2. Jacquelin S, *et al.* 2013. *Blood.* 122:674.
3. Garcia JA, *et al.* 2013. *J. Immunol.* 191:1063.
4. Lee YS, *et al.* 2013. *Ce*