

Mouse MDSC Flow Cocktail 2 with Isotype Ctrl

Catalog # / Size: 1335015 / 25 tests

Clone: M1/70/1A8/HK1.4

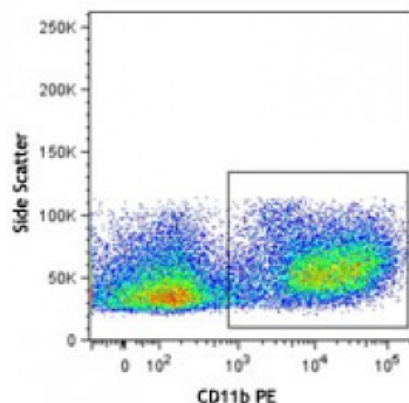
Isotype: Rat IgG2a,Rat IgG2b,Rat IgG2c

Reactivity: Mouse

Preparation: This reagent is a multicolor cocktail of PE conjugated CD11b (clone M1/70), FITC conjugated Ly-6G (clone 1A8) and APC conjugated Ly-6C (clone HK1.4) at optimal concentration for three-color flow cytometric analysis.

Formulation: Phosphate-buffered solution, pH 7.2, containing 0.09% sodium azide and 0.2% (w/v) BSA (origin USA).

Concentration: Lot-specific

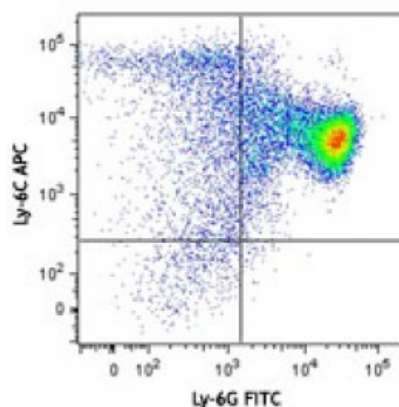


C57BL/6 mouse splenocytes were stained with mouse MDSC Flow Cocktail 2 (CD11b PE/Ly-6G FITC/Ly-6C APC).

Applications:

Applications: Flow Cytometry

Recommended Usage: Each lot of these antibodies is quality control tested by immunofluorescent staining with flow cytometric analysis. For flow cytometric staining, the suggested use of this reagent is 20 microL per million cells or 20 microL per 100 microL of whole blood. It is recommended that the reagent be titrated for optimal performance for each application.



Application Notes:

Materials provided:

1. Mouse MDSC Flow Cocktail (containing CD11b PE/Ly-6G FITC/Ly-6C APC), 25 tests
2. Mouse MDSC Isotype Control Cocktail (containing rat IgG2b PE/rat IgG2a FITC/rat IgG2c APC), 25 tests

Materials not provided:

Cell Staining Buffer (Cat. No. 420201)
Single color compensation controls

Description: This mouse MDSC Flow Cocktail 2 is composed of CD11b, Ly-6C, and Ly-6G antibodies. MDSCs are a heterogenous population of cells that can affect T cell function. Two different subsets of MDSC exist: CD11b⁺Ly-6G⁺Ly-6C^{low} (granulocytic MDSC) and CD11b⁺Ly-6G⁺Ly-6C^{hi} (monocytic MDSC). These cells have been identified in a variety of pathological conditions including cancer and autoimmune disease.

CD11b: CD11b is a 170 kD glycoprotein also known as α M integrin, Mac-1 α subunit, Mol, CR3, and Ly-40. CD11b is a member of the integrin family, primarily expressed on granulocytes, monocytes/macrophages, dendritic cells, NK cells, and subsets of T and B cells. CD11b non-covalently associates with CD18 (β 2 integrin) to form Mac-1. Mac-1 plays an important role in cell-cell interaction by binding its ligands ICAM-1 (CD54), ICAM-2 (CD102), ICAM-4 (CD242), iC3b, and fibrinogen.

Ly-6G: Lymphocyte antigen 6 complex, locus G (Ly-6G), a 21-25 kD GPI-anchored protein, is expressed on the majority of myeloid cells in bone marrow and peripheral granulocytes.

Ly-6C: Most hematopoietic cells express one or more members of Ly-6 family. The expression of Ly-6 varies with development stage and activation. Ly-6C is a 14-17 kD GPI-linked surface protein expressed on mouse monocyte/macrophage cells, endothelial cells, neutrophils, and some T cell subsets. Ly-6C is reported to be an indicator of memory CD8⁺ T cells.

**Antigen
References:**

1. Daley JM, *et al.* 2008. *J. Leukocyte Biol.* 83:1.
2. Fleming TJ, *et al.* 1993. *J. Immunol.* 151:2399.
3. Dietlin TA, *et al.* 2007. *J. Leukocyte Biol.* 81:1205.
4. Barclay A, *et al*