

PE anti-mouse CD6

Catalog # / Size: 1332020 / 100 µg
1332015 / 25 µg

Clone: OX-129

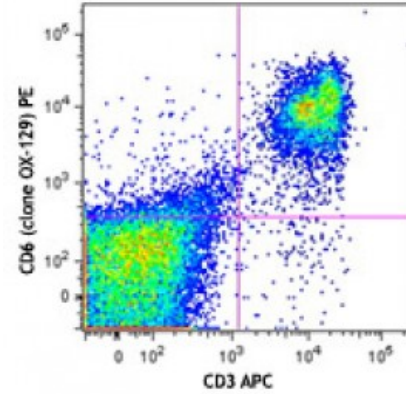
Isotype: Rat IgG2a, κ

Reactivity: Mouse

Preparation: The antibody was purified by affinity chromatography and conjugated with PE under optimal conditions. The solution is free of unconjugated PE and unconjugated antibody.

Formulation: Phosphate-buffered solution, pH 7.2, containing 0.09% sodium azide.

Concentration: 0.2

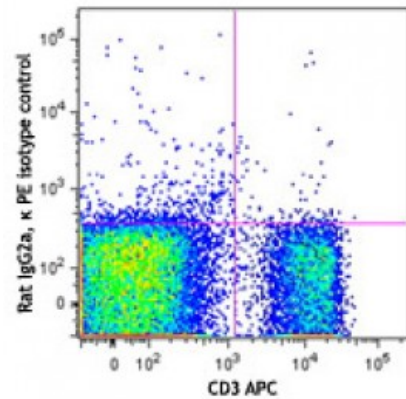


C57BL/6 mouse splenocytes were stained with CD3 APC and anti-mouse CD6 (clone OX-129) PE (top) or rat IgG2a, κ PE isotype control (bottom).

Applications:

Applications: Flow Cytometry

Recommended Usage: Each lot of this antibody is quality control tested by immunofluorescent staining with flow cytometric analysis. For flow cytometric staining, the suggested use of this reagent is ≤0.25 microg per million cells in 100 microL volume. It is recommended that the reagent be titrated for optimal performance for each application.



Description: CD6, a 100 kD monomeric T cell surface glycoprotein, is a member of the scavenger receptor cysteine-rich protein superfamily. It is expressed on mouse thymocytes and splenic T cells and neurons, but not on splenic B cells. CD6 has a long cytoplasmic tail in mice, with two proline-rich domains that interact with the -SH3 domain binding sequence. CD6 binding to its ligand, CD166 (ALCAM), serves as a costimulatory molecule through its interaction with SLP-76. CD6 mediated signaling may contribute to thymocyte survival and functional avidity in mice and men.

Antigen References:

1. Osorio LM, *et al.* 1995. *Cell. Immunol.* 166:44.
2. Whitney G, *et al.* 1995. *Mol. Immunol.* 32:89.
3. Starling GC, *et al.* 1996. *Eur. J. Immunol.* 26:738.