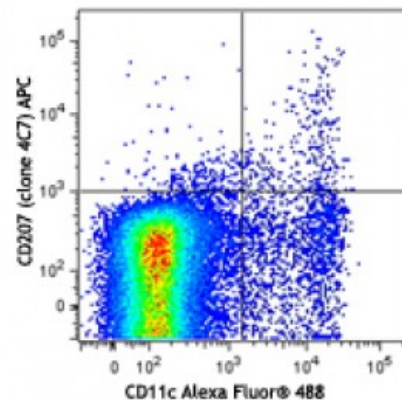


APC anti-mouse/human CD207 (Langerin)

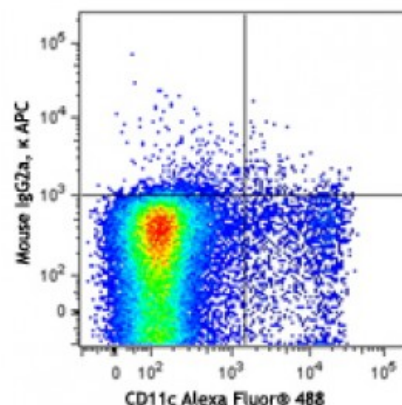
Catalog # / Size:	1321025 / 25 µg 1321030 / 100 µg
Clone:	4C7
Isotype:	Mouse IgG2a, κ
Immunogen:	Langerin extracellular domain-Fc fusion protein
Reactivity:	Human
Preparation:	The antibody was purified by affinity chromatography and conjugated with APC under optimal conditions. The solution is free of unconjugated APC and unconjugated antibody.
Formulation:	Phosphate-buffered solution, pH 7.2, containing 0.09% sodium azide.
Concentration:	0.2



Cells from a collagenase-digested BALB/c mouse spleen were stained with CD11c Alexa Fluor® 488 and CD207 (clone 4C7) APC (top) or mouse IgG2a, κ APC isotype control (bottom).

Applications:

Applications:	Flow Cytometry
Recommended Usage:	Each lot of this antibody is quality control tested by immunofluorescent staining with flow cytometric analysis. For flow cytometric staining, the suggested use of this reagent is ≤0.25 microg per million cells in 100 microL volume. It is recommended that the reagent be titrated for optimal performance for each application.



Description: CD207, also known as langerin, is a 40 kD single-pass type II transmembrane protein, member of the C-type lectin family. CD207 is expressed on the cell surface and Birbeck granules (BGs) of Langerhans cells, and subsets of thymic and splenic dendritic cells. Its ligands are mannose, *n*-acetylglucosamine, fucose, and sulfated glycans. Langerin is involved in the antigen processing pathway through capture and internalization of its ligands.

Antigen	1. Romani N, <i>et al.</i> 2012. <i>Curr. Top. Microbiol. Immunol.</i> 351:113.
References:	2. Kaplan DH. 2010. <i>Trends Immunol.</i> 31:446.
	3. Clausen BE and Kel JM. 2010. <i>Immunol. Cell. Biol.</i> 88:351.
	4. Merad M, <i>et al.</i>