

APC anti-mouse CD355 (CRTAM)

Catalog # / Size: 1310040 / 100 µg
1310035 / 25 µg

Clone: 11-5/CRTAM

Isotype: Rat IgG2a, κ

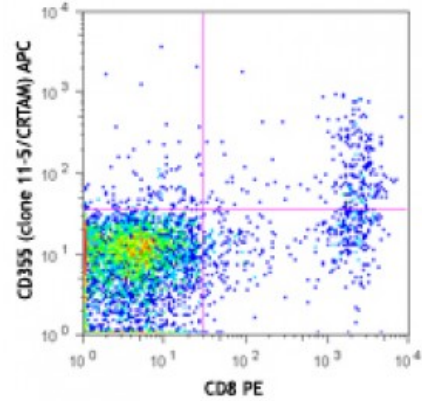
Immunogen: CRTAM extracellular region-human IgG Fc fusion protein

Reactivity: Mouse

Preparation: The antibody was purified by affinity chromatography and conjugated with APC under optimal conditions. The solution is free of unconjugated APC and unconjugated antibody.

Formulation: Phosphate-buffered solution, pH 7.2, containing 0.09% sodium azide.

Concentration: 0.2



C57BL/6 mouse splenocytes were stimulated (overnight) with immobilized TCR-β (clone H57-597), then stained with CD8 PE and CD355 (clone 11-5/CRTAM) APC (top) or rat IgG2a, κ APC isotype control (bottom).

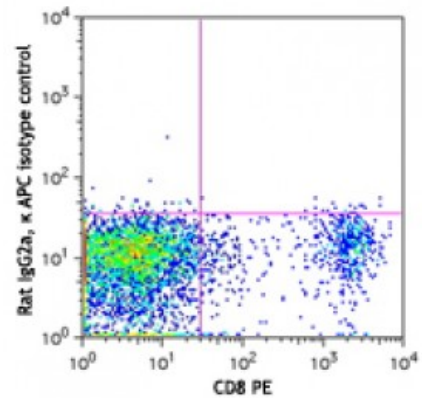
Applications:

Applications: Flow Cytometry

Recommended Usage: Each lot of this antibody is quality control tested by immunofluorescent staining with flow cytometric analysis. For flow cytometric staining, the suggested use of this reagent is ≤0.5 microg per million cells in 100 microL volume. It is recommended that the reagent be titrated for optimal performance for each application.

Application Notes: Additional reported applications (for relevant formats) include: Western blotting¹.

Application References: 1. Arase N, *et al.* 2005. *Int. Immunol.* 17:1227. (WB)



Description: Class-I MHC-restricted T-cell associated molecule (CRTAM), designated as CD355, is an Ig domain like type I transmembrane receptor, which belongs to the nectin family. In the immune system, CRTAM is strictly expressed on activated NK cells and activated CD8-positive T cells. By binding its ligand Nectin-like molecule 2 (Nectin2), CRTAM plays an important role in mediating cell adhesion and migration.

Antigen References:

1. Takeuchi A, *et al.* 2009. *J. Immunol.* 183:4220.
2. Yeh JH, *et al.* 2008. *Cell* 132:846.
3. Arase N. 2005. *Int. Immunol.* 17:1227.
4. Boles KS, *et al.* 2005. *Blood* 106:779. <