

**PE anti-mouse CD355 (CRTAM)**

**Catalog # / Size:** 1310025 / 25 µg  
1310030 / 100 µg

**Clone:** 11-5/CRTAM

**Isotype:** Rat IgG2a, κ

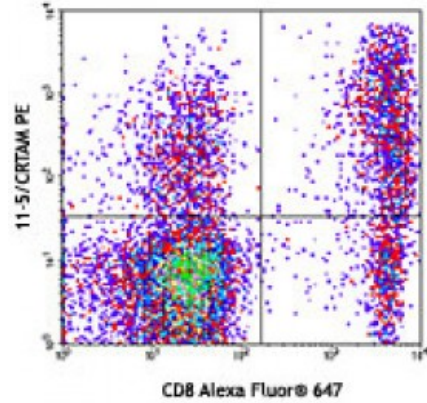
**Immunogen:** CRTAM extracellular region-human IgG Fc fusion protein

**Reactivity:** Mouse

**Preparation:** The antibody was purified by affinity chromatography and conjugated with PE under optimal conditions. The solution is free of unconjugated PE and unconjugated antibody.

**Formulation:** Phosphate-buffered solution, pH 7.2, containing 0.09% sodium azide.

**Concentration:** 0.2



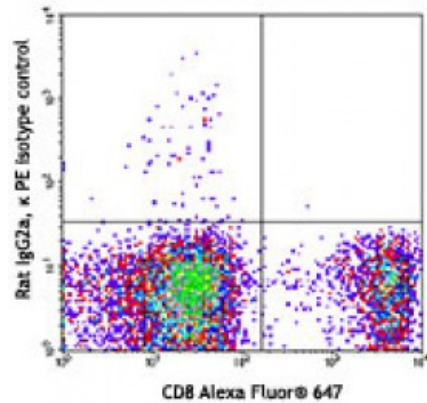
C57BL/6 mouse splenocytes were stimulated with immobilized TCR-β (clone H57-597) and then stained with CD8 Alexa Fluor® 647 and CD355 (clone 11-5/CRTAM) PE (top) or rat IgG2a, κ PE isotype control (bottom).

**Applications:**

**Applications:** Flow Cytometry

**Recommended Usage:** Each lot of this antibody is quality control tested by immunofluorescent staining with flow cytometric analysis. For flow cytometric staining, the suggested use of this reagent is ≤0.25 microg per million cells in 100 microL volume. It is recommended that the reagent be titrated for optimal performance for each application.

**Application Notes:** Additional reported applications (for relevant formats) include: Western blotting<sup>1</sup>.



**Application References:** 1. Arase N, *et al.* 2005. *Int. Immunol.* 17:1227. (WB)

**Description:** Class-I MHC-restricted T-cell associated molecule (CRTAM), designated as CD355, is an Ig domain like type I transmembrane receptor, which belongs to the nectin family. In the immune system, CRTAM is strictly expressed on activated NK cells and activated CD8-positive T cells. By binding its ligand Nectin-like molecule 2 (Nectin2), CRTAM plays an important role in mediating cell adhesion and migration.

**Antigen References:**

1. Takeuchi A, *et al.* 2009. *J. Immunol.* 183:4220.
2. Yeh JH, *et al.* 2008. *Cell* 132:846.
3. Arase N. 2005. *Int. Immunol.* 17:1227.
4. Boles KS, *et al.* 2005. *Blood* 106:779. <