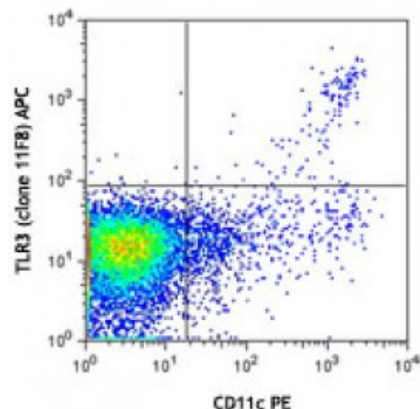


APC anti-mouse CD283 (TLR3)

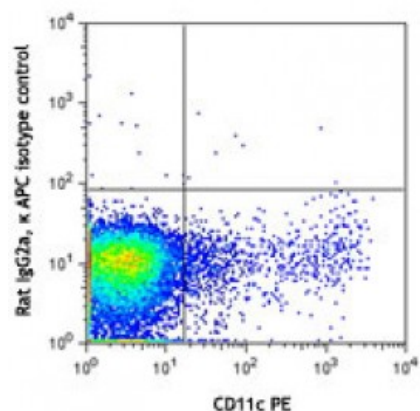
Catalog # / Size:	1309525 / 25 µg 1309530 / 100 µg
Clone:	11F8
Isotype:	Rat IgG2a
Immunogen:	Recombinant mouse TLR3 extracellular domain.
Reactivity:	Mouse
Preparation:	The antibody was purified by affinity chromatography and conjugated with APC under optimal conditions. The solution is free of unconjugated APC and unconjugated antibody.
Formulation:	Phosphate-buffered solution, pH 7.2, containing 0.09% sodium azide.
Concentration:	0.2



C57BL/6 mouse splenocytes were surface stained with CD4/CD19/Ly-6G/NK1.1 PerCP, CD11c PE and CD8 FITC, followed by intracellular staining with TLR3 (clone 11F8) APC (top) or rat IgG2a, κ APC isotype control (bottom). The data was analyzed by gating

Applications:

Applications:	Flow Cytometry
Recommended Usage:	Each lot of this antibody is quality control tested by intracellular immunofluorescent staining with flow cytometric analysis. For flow cytometric staining, the suggested use of this reagent is ≤0.5 microg per million cells in 100 microL volume. It is recommended that the reagent be titrated for optimal performance for each application.
Application Notes:	Additional reported application (for the relevant formats) include: immunohistochemical staining of frozen tissue ¹ .



Application References:	1. McCartney S, <i>et al.</i> 2009. <i>J. Exp. Med.</i> 13:2967. (IHC)
--------------------------------	--

Description:	Toll-like receptor 3 (TLR3), also known as CD283, is type I transmembrane protein that belongs to the TLR family. It forms a large horseshoe shape that contacts a neighboring horseshoe, forming a dimer of two horseshoes. It is characterized by an extracellular domain with leucine-rich repeats and a cytoplasmic domain with homology to the type I IL-1 receptor. TLR3 is expressed selectively on the cytoplasmic membrane and intracellularly in dendritic cells. It is also highly expressed in the placenta, pancreas, heart, liver, lung, and muscle. TLR3 is a pattern recognition receptor that participates in innate immune response to microbial pathogens by recognizing polyinosine-polycytidylic acid (Poly(I:C)) and
---------------------	--

dsRNA. Ligand binding by TLR3 induces receptor dimerization which results in inducing NF- κ B activation (via TRIF-linked RIP1/TLR3 interactions) and cytokine production. TLR3 has been shown to interact with a number of proteins including MYD88, TRAF6, TRIAD3, MAP3K7, and TAB2.

**Antigen
References:**

1. Alexopoulou L, *et al.* 2001. *Nature* 413:732.
2. Doyle SE, *et al.* 2002. *Immunity* 17:251.
3. Meylan E, *et al.* 2004. *Nat Immunol.* 5:503.
4. Muzio M, *et al.* 2000. *J. Immuno*