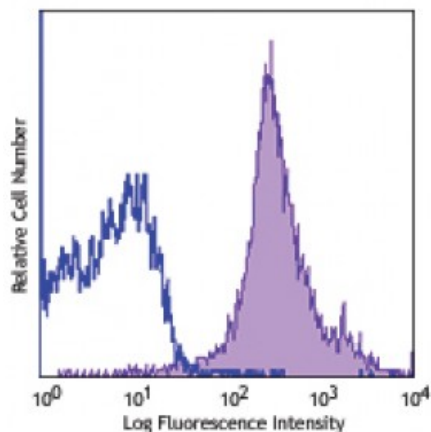


Purified anti-mouse CD11a/CD18 (LFA-1)

Catalog # / Size: 1305010 / 500 µg
Clone: H155-78
Isotype: Rat IgG1, κ
Immunogen: T_H-derived anti-I-Ak CTL clone A1 5.1.17
Reactivity: Mouse
Preparation: The antibody was purified by affinity chromatography.
Formulation: Phosphate-buffered solution, pH 7.2, containing 0.09% sodium azide.
Concentration: 0.5



C57BL/6 splenocytes were stained with LFA-1 (clone H155-78) PerCP/Cy5.5 (filled histogram) or rat IgG1 PerCP/Cy5.5 isotype control (open histogram).

Applications:

Applications: Flow Cytometry

Recommended Usage: Each lot of this antibody is quality control tested by immunofluorescent staining with flow cytometric analysis. For flow cytometric staining, the suggested use of this reagent is ≤0.25 microg per million cells in 100 microL volume. It is recommended that the reagent be titrated for optimal performance for each application.

Application Notes: This clone is reported to have some effect on increasing LFA-1-mediated adhesion and does not block LFA-1 binding1.

Application References: 1. Pont S, *et al.* 1986. *J. Immunol.* 136:3750. (FC)

Description: Lymphocyte function-associated antigen 1 or LFA-1 is a heterodimer composed of two members of the integrin family, α_L (CD11a) and β₂ (CD18). LFA-1 is expressed primarily on lymphocytes, monocytes/macrophages, and granulocytes. It is involved in cell adhesion and costimulation processes. The ligands for LFA-1 are ICAM-1 (CD54), ICAM-2 (CD102), and ICAM-3 (CD50).

Antigen References: 1. Dugger KJ, *et al.* 2009. *J. Neuroimmunol.* 206:22.
2. Barclay A, *et al.* 1997. *The Leukocyte Antigen Facts Book* Academic Press.
3. Springer TA. 1994. *Cell* 76:301.
4. Lub M, *et al.*