

PerCP/Cy5.5 anti-mouse/human KLRG1 (MAFA)

Catalog # / Size: 1292090 / 100 µg
1292085 / 25 µg

Clone: 2F1/KLRG1

Isotype: Hamster IgG

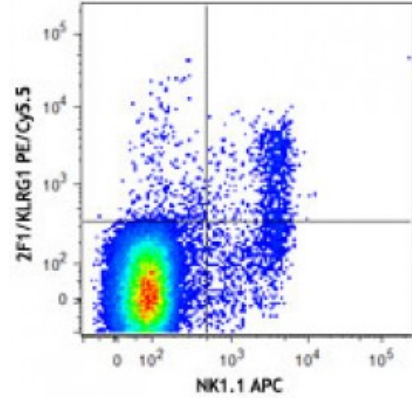
Immunogen: IL-2 activated NK cells from C57BL/6 mice

Reactivity: Human, Mouse

Preparation: The antibody was purified by affinity chromatography and conjugated with PerCP/Cy5.5 under optimal conditions. The solution is free of unconjugated PerCP/Cy5.5 and unconjugated antibody.

Formulation: Phosphate-buffered solution, pH 7.2, containing 0.09% sodium azide.

Concentration: 0.2



C57BL/6 mouse splenocytes were stained with NK1.1 APC and mouse/human KLRG1 (clone 2F1/KLRG1) PerCP/Cy5.5.

Applications:

Applications: Flow Cytometry

Recommended Usage: Each lot of this antibody is quality control tested by immunofluorescent staining with flow cytometric analysis. For flow cytometric staining, the suggested use of this reagent is ≤0.25 microg per million cells in 100 microL volume. It is recommended that the reagent be titrated for optimal performance for each application.

* PerCP/Cy5.5 has a maximum absorption of 482 nm and a maximum emission of 690 nm.

Application Notes: **For successful staining of human cells, brighter fluorophore-antibody conjugates, such as PE, BV421™, or APC, are recommended.**

Additional reported applications (for relevant formats) include: Western Blotting1.

This product may be used for research purposes only. It is not licensed for resale and may only be used by the buyer. This product may not be used and is not licensed for clinical assays, where the results of such assays are provided as a diagnostic service. If a diagnostic or therapeutic use is anticipated, then a license must be requested from the University of California. The availability of such diagnostic and therapeutic use license(s) cannot be guaranteed from the University of California.

Application References:

1. Robbins SH, et al. 2002. *J. Immunol.* 168:2585. (WB)
2. Robbins SH, et al. 2003. *J. Immunol.* 170:5876. (FC)
3. McMahon CW, et al. 2002. *J. Immunol.* 169:1444. (FC)

Description: Killer cell lectin-like receptor G1 (KLRG1) is the mouse homolog of the rat mast cell function-associated antigen (MAFA or 2F1-Ag). KLRG1 is a type II membrane glycoprotein that was first identified on the surface of rat mast cell line RBL-2H3. It is composed of a homodimer of glycosylated 30-38 kD subunits. Mouse and

human homologs of KLRG1 are expressed by subsets of NK cells and lymphokine-activated killer (LAK) cells but not mast cells. KLRG1 is also expressed on subsets of CD8⁺ and CD4⁺ cells, including CD4⁺ and CD8⁺ effector/memory cells, potent regulatory CD4⁺ T cells. KLRG1 may be involved in regulating NK cell homeostasis. KLRG1 was found to recognize cadherins and thus inhibit immune responses by regulating the effector function and the developmental processes of NK and T cells.

**Antigen
References:**

1. Grundemann C, *et al.* 2006. *J. Immunol.* 176:1311.
2. Blaser C, *et al.* 1998. *J. Immunol.* 161:6451.
3. Huntington ND, *et al.* 2007. *J. Immunol.* 178:4764.
4. Voehringer D, *et al.*