

Pacific Blue™ anti-mouse CD68

Catalog # / Size: 1285135 / 25 µg
1285140 / 100 µg

Clone: FA-11

Isotype: Rat IgG2a

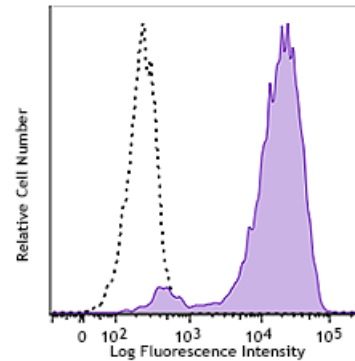
Immunogen: Purified Con A receptor glycoproteins from the P815 cell line

Reactivity: Mouse

Preparation: The antibody was purified by affinity chromatography and conjugated with Pacific Blue™ under optimal conditions. The solution is free of unconjugated Pacific Blue™.

Formulation: Phosphate-buffered solution, pH 7.2, containing 0.09% sodium azide.

Concentration: 0.5 mg/ml



Thioglycolate-elicited BALB/c macrophages were fixed, permeabilized, and then stained with CD68 (clone FA-11) Pacific Blue™ (filled histogram) or rat IgG2a, κ Pacific Blue™ isotype control (open histogram).

Applications:

Applications: Intracellular Flow Cytometry

Recommended Usage: Each lot of this antibody is quality control tested by intracellular immunofluorescent staining with flow cytometric analysis. For flow cytometric staining, the suggested use of this reagent is ≤ 0.25 µg per million cells in 100 µl volume. It is recommended that the reagent be titrated for optimal performance for each application.

* Pacific Blue™ has a maximum emission of 455 nm when it is excited at 405 nm. Prior to using Pacific Blue™ conjugate for flow cytometric analysis, please verify your flow cytometer's capability of exciting and detecting the fluorochrome.

Application Notes: Additional reported (for relevant formats) applications include: immunoprecipitation^{1, 2}, Western Blot^{1, 2}, and immunohistochemical staining of frozen sections² and paraformaldehyde-fixed paraffin-embedded sections³.

- Application References:**
1. Silva RP, *et al.* 1999. *Biochem. J.* 338:687. (IP, WB)
 2. Rabinowitz SS, *et al.* 1991. *J. Exp. Med.* 174:827. (IP, WB, IHC)
 3. Wu J, *et al.* 2008. *P. Natl. Acad. Sci. USA* 105:16934. (IHC)
 4. Kayama H, *et al.* 2012. *PNAS.* 109:5010. [PubMed](#)
 5. Park S, *et al.* 2013. *Biomaterials.* 34:598. [PubMed](#)
 6. Guiducci C, *et al.* 2013. *J Exp Med.* 210:2903. [PubMed](#)
 7. McKinstry SU, *et al.* 2014. *J Neurosci.* 34:9455. [PubMed](#)
 8. Li X, *et al.* 2015. *J Am Heart Assoc.* 6:4. [PubMed](#)

Description: Mouse CD68, also known as macrosialin, is an 85-115 kD member of the lysosomal-associated membrane protein (LAMP) family. It is a heavily glycosylated and predominantly intracellular protein, mainly in late endosomes. Macrosialin is the murine homolog to the human macrophage glycoprotein CD68. It is expressed on tissue macrophages, Langerhans cells and at low levels on dendritic cells. Lamp proteins may have functions relating to cell-cell interaction or cell-ligand interaction. The biological function of CD68 is not completely understood.

Antigen 1. Ramprasad MP, *et al.* 1996. *Proc. Natl. Acad. Sci. USA* 93:14833.
References: 2. Smith MJ, *et al.* 1987. *J. Cell. Sci.* 87:113.