

PE anti-mouse CD279 (PD-1)

Catalog # / Size: 1276030 / 200 µg
1276025 / 50 µg

Clone: 29F.1A12

Isotype: Rat IgG2a, κ

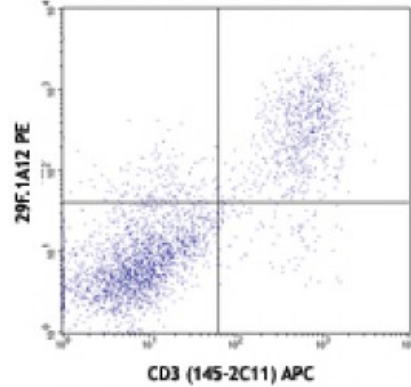
Immunogen: PD-1 cDNA followed by PD-1-Ig fusion protein

Reactivity: Mouse

Preparation: The antibody was purified by affinity chromatography, and conjugated with PE under optimal conditions. The solution is free of unconjugated PE and unconjugated antibody.

Formulation: Phosphate-buffered solution, pH 7.2, containing 0.09% sodium azide.

Concentration: 0.2



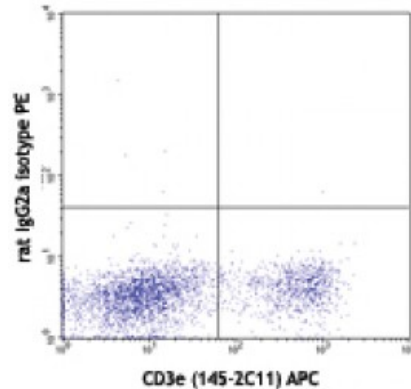
Con A-stimulated (3 days) C57BL/6 splenocytes stained with 29F.1A12 PE and CD3 (145-2C11) APC

Applications:

Applications: Flow Cytometry

Recommended Usage: Each lot of this antibody is quality control tested by immunofluorescent staining with flow cytometric analysis. For flow cytometric staining, the suggested use of this reagent is ≤1.0 microg per million cells in 100 microL volume. It is recommended that the reagent be titrated for optimal performance for each application.

Application Notes: Additional reported applications (for the relevant formats) include: immunohistochemical staining of acetone-fixed frozen tissue³ and *in vivo* blocking of PD-1 binding to its ligands^{2,3}.



Con A stimulated (3 days) C57BL/6 splenocytes stained with rat IgG2a isotype PE and CD3e (145-2C11) APC

- Application References:**
1. Good-Jacobson KL, *et al.* 2010. *Nat. Immunol.* 11:535. (FC) [PubMed](#)
 2. Lázár-Molnár E, *et al.* 2008. *Proc. Natl. Acad. Sci. USA* 105:2658. (Block)
 3. Liang SC, *et al.* 2003. *Eur. J. Immunol.* 33:2706. (FC, IHC, Block)

Description: CD279, also known as programmed death-1 (PD-1), is a 50-55 kD glycoprotein belonging to the CD28 family of the Ig superfamily. PD-1 is expressed on activated splenic T and B cells and thymocytes. It is induced on activated myeloid cells as well. PD-1 is involved in lymphocyte clonal selection and peripheral tolerance through binding its ligands, B7-H1 (PD-L1) and B7-DC (PD-L2). It has been reported that PD-1 and PD-L1 interactions are critical to positive selection and play a role in shaping the T cell repertoire. PD-L1 negative costimulation is essential for prolonged survival of intratesticular islet allografts.

- Antigen References:**
1. Nishimura H, *et al.* 2001. *Science* 291:319
 2. Agata Y, *et al.* 1996. *Int. Immunol.* 8:765

3. Liang SC, *et al.* 2003. *Eur. J. Immunol.* 33:2706
4. Barber DL, *et al.* 2006. *Na*