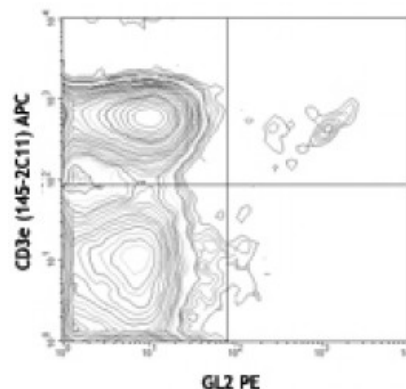


PE anti-mouse TCR V64

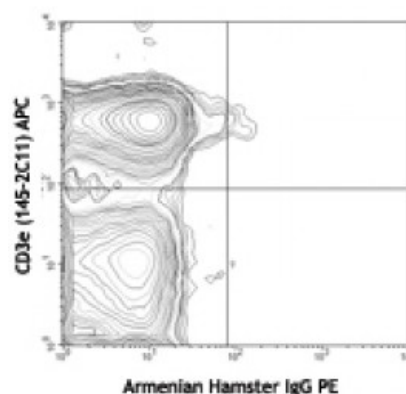
Catalog # / Size: 1274525 / 25 µg
Clone: GL2
Isotype: Hamster IgG2, κ
Immunogen: G57BL/6 mouse intestinal intra-epithelial lymphocytes
Reactivity: Mouse
Preparation: The antibody was purified by affinity chromatography, and conjugated with PE under optimal conditions. The solution is free of unconjugated PE and unconjugated antibody.
Formulation: Phosphate-buffered solution, pH 7.2, containing 0.09% sodium azide.
Concentration: 0.2



C57BL/6 lymph node cells stained with GL2 PE and CD3e (145-2C11) APC

Applications:

Applications: Flow Cytometry
Recommended Usage: Each lot of this antibody is quality control tested by immunofluorescent staining with flow cytometric analysis. For flow cytometric staining, the suggested use of this reagent is ≤0.25 microg per million cells in 100 microL volume. It is recommended that the reagent be titrated for optimal performance for each application.



C57BL/6 lymph node cells stained with Armenian Hamster IgG (HTK888) PE isotype control and CD3e (145-2C11) APC

Application References: 1. Lefrancois L, *et al.* 1990. *Cell*. 66:33
 2. Sperling AI, *et al.* 1992. *J. Immunol.* 149(10):3200
 3. Pereira P, *et al.* 1997. *Proc. Natl. Acad. Sci. USA*. 94:5761

Description: Lymphocytes expressing γ/δ antigen receptors constitute a minor population in lymphoid tissue, but a major population within epidermal, gastrointestinal, and vaginal epithelia. Gamma/Delta T cells are involved in immunological surveillance of epithelia separating the external environment from the internal milieu. The GL2 antibody reacts with V64 T-cell receptor (TCR) bearing T cells, which are the predominant γ/δ T cells in intestinal epithelium (γ/δ IEL). Gamma/delta T cells has been found in mammary gland as well. The frequency of V64 TCR-bearing cells varies among inbred strains of mice.

Antigen References: 1. Reardon C *et al.* 1990. *J. Exp. Med.* 172:1263
 2. Goodman T *et al.* 1989. *J. Exp. Med.* 170:1569