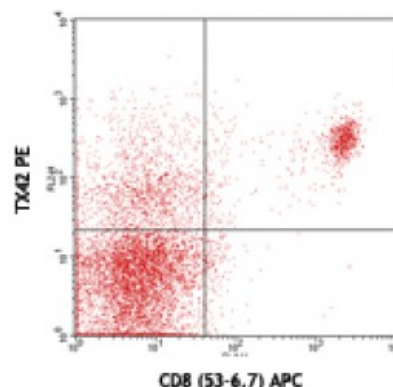


PE anti-mouse CD226 (DNAM-1)

Catalog # / Size: 1268015 / 25 µg
Clone: TX42.1
Isotype: Rat IgG2a, κ
Immunogen: Mouse DNAM-1 transfected cells
Reactivity: Mouse
Preparation: The antibody was purified by affinity chromatography, and conjugated with PE under optimal conditions. The solution is free of unconjugated PE and unconjugated antibody.
Formulation: Phosphate-buffered solution, pH 7.2, containing 0.09% sodium azide.
Concentration: 0.2



C57BL/6 splenocytes stained with CD8 (53-6.7) APC and TX42 PE

Applications:

Applications: Flow Cytometry

Recommended Usage: Each lot of this antibody is quality control tested by immunofluorescent staining with flow cytometric analysis. For flow cytometric staining, the suggested use of this reagent is ≤0.25 microg per million cells in 100 microL volume. It is recommended that the reagent be titrated for optimal performance for each application.

Application References: 1. Dardalhon V, *et al.* 2005. *J. Immunol.* 175:1558
 2. Shirakawa J, *et al.* 2006. *International Immunology* 18(6):951-957

Description: Mouse CD226 (DNAM-1) is a 65 kd glycoprotein of a member of Ig super-family adhesion molecule containing 2 immunoglobulin-like domains. It is associated with leukocyte function associated antigen-1 (LFA-1) involving in TCR-mediated signal transduction for T cell proliferation and differentiation. CD226 is also involved in NK cell and T cell mediated cytotoxicity against certain tumors. CD226 (DNAM-1) is constitutively expressed on naïve CD8⁺ and CD4⁺ T cells, macrophages, and NK cells. It was reported that CD226 expression is up-regulated on Th1 cells, but down-regulated on Th2 and Th0 cells. CD155 and CD112 are the ligands for CD226.

Antigen References: 1 Tahara Hanaoka S, *et al.* 2006. *Blood.* 107:1491
 2 Shibuya K *et al.* 2003. *J. Exp. Med.* 198:1829.