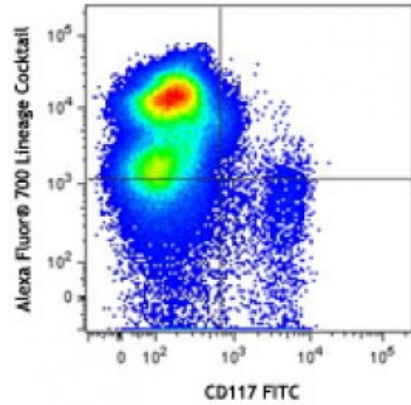


Alexa Fluor® 700 anti-mouse Lineage Cocktail with Isotype Ctrl

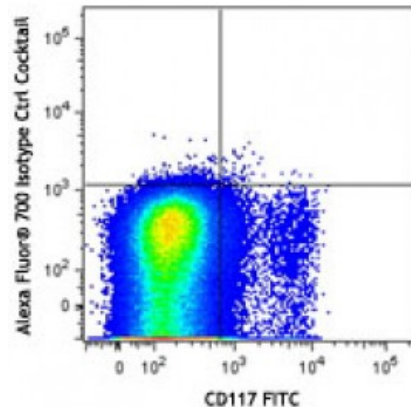
Catalog # / Size: 1266565 / 25 tests
Clone: 17A2/RB6-8C5/RA3-6B2/Ter-119/M1/70
Isotype: Rat IgG2a,Rat IgG2b
Reactivity: Mouse
Preparation: The antibodies are purified by affinity chromatography, and conjugated with Alexa Fluor® 700 under optimal conditions. The solutions are free of unconjugated Alexa Fluor® 700.
Formulation: This two-reagent set contains Alexa Fluor® 700 conjugated antibodies and isotype controls in optimal concentration for flow cytometric analysis.
Concentration: Lot-specific



C57BL/6 mouse bone marrow cells were stained with CD117 FITC and Alexa Fluor® 700 lineage cocktail (top plot) or Alexa Fluor® 700 isotype controls (bottom plot).

Applications:

Applications: Flow Cytometry
Recommended Usage: Each lot of these antibodies is quality control tested by immunofluorescent staining with flow cytometric analysis. For flow cytometric staining, the suggested use of this reagent is 20 microL per million cells or 20 microL per 100 microL of whole blood. It is recommended that the reagent be titrated for optimal performance for each application.



Description: The mouse lineage panel has been designed to react with cells from the major hematopoietic cell lineages, such as T lymphocytes, B lymphocytes, monocytes/macrophages, granulocytes, NK cells, and erythrocytes. The Alexa Fluor® 700 Mouse Lineage Antibody Cocktail is designed for the flow cytometric identification of hematopoietic progenitors in mouse bone marrow. Components include anti-mouse CD3, clone 17A2; anti-mouse Ly-6G/Ly-6C, clone RB6-8C5; anti-mouse CD11b, clone M1/70; anti-mouse CD45R/B220, clone RA3-6B2; anti-mouse TER-119/Erythroid cells, clone Ter-119. Alexa Fluor® 700 Mouse Lineage Isotype Control Cocktail contains equivalent concentrations of isotype-matched negative control immunoglobulin.

Materials provided:

- 1. Alexa Fluor® 700 anti-mCD3/ Alexa Fluor® 700 anti-mLy-6G(Ly-6C)/ Alexa Fluor® 700 anti-mCD11b/ Alexa Fluor® 700 anti-mCD45R(B220)/ Alexa Fluor® 700 anti-mTer-119

2. Alexa Fluor® 700 Rat IgG2b/Rat IgG2a isotype controls

Materials not provided:

Cell Staining Buffer (Cat. No. 420201)

**Antigen
References:**

1. Morrison SJ, *et al.* 1997. *Development* 124:1929.
2. Okada S, *et al.* 1992. *Blood* 80:3044.
3. Spangrude GJ, *et al.* 1988. *Science* 241:58.
4. Spangrude GJ, *et al.* 1990.