

Pacific Blue™ anti-mouse Lineage Cocktail with Isotype Ctrl

Catalog # / Size: 1266530 / 100 tests
1266525 / 25 tests

Clone: 17A2/RB6-8C5/RA3-6B2/Ter-119/M1/70

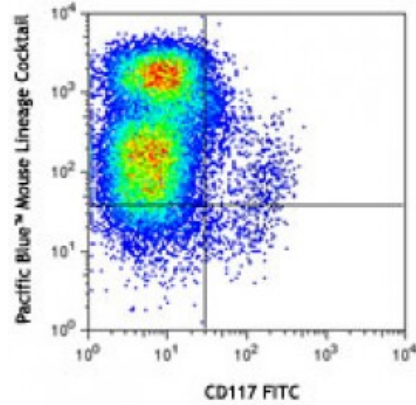
Isotype: Rat IgG2a,Rat IgG2b

Reactivity: Mouse

Preparation: The antibodies are purified by affinity chromatography, and conjugated with Pacific Blue™ under optimal conditions. The solutions are free of unconjugated Pacific Blue™.

Formulation: This two-reagent set contains Pacific Blue™ conjugated antibodies and isotype controls in optimal concentration for flow cytometric analysis.

Concentration: Lot-specific

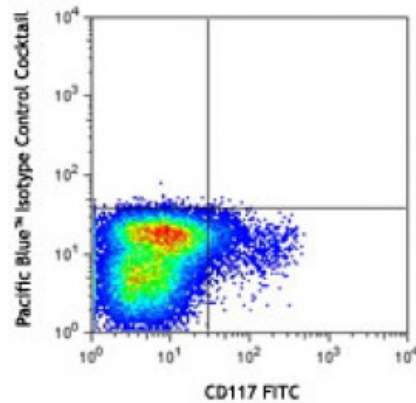


C57BL/6 bone marrow cells were stained with CD117 FITC and Pacific Blue™ lineage cocktail (top plot) or Pacific Blue™ isotype control cocktail (bottom plot).

Applications:

Applications: Flow Cytometry

Recommended Usage: Each lot of these antibodies is quality control tested by immunofluorescent staining with flow cytometric analysis. For flow cytometric staining, the suggested use of this reagent is 20 microL per million cells or 20 microL per 100 microL of whole blood. It is recommended that the reagent be titrated for optimal performance for each application.



Description: The mouse lineage panel has been designed to react with cells from the major hematopoietic cell lineages, such as T lymphocytes, B lymphocytes, monocytes/macrophages, granulocytes, NK cells, and erythrocytes. The Pacific Blue™ Mouse Lineage Antibody Cocktail is designed for the flow cytometric identification of hematopoietic progenitors in mouse bone marrow. Components include anti-mouse CD3, clone 17A2; anti-mouse Ly-6G/Ly-6C, clone RB6-8C5; anti-mouse CD11b, clone M1/70; anti-mouse CD45R/B220, clone RA3-6B2; anti-mouse TER-119/Erythroid cells, clone Ter-119. Pacific Blue™ Mouse Lineage Isotype Control Cocktail contains equivalent concentrations of isotype-matched negative control immunoglobulin.

Materials provided:

1. Pacific Blue™ anti-mCD3/ Pacific Blue™ anti-mLy-6G(Ly-6C)/ Pacific Blue™ anti-mCD11b/ Pacific Blue™ anti-mCD45R(B220)/ Pacific Blue™ anti-mTer-119
2. Pacific Blue™ Rat IgG2b/Rat IgG2a isotype controls

Materials not provided:

Cell Staining Buffer (Cat. No. 420201)

**Antigen
References:**

1. Morrison SJ, *et al.* 1997. *Development* 124:1929.
2. Okada S, *et al.* 1992. *Blood* 80:3044.
3. Spangrude GJ, *et al.* 1988. *Science* 241:58.
4. Spangrude GJ, *et al.* 1990.