

**FITC anti-mouse Lineage Cocktail with Isotype Ctrl**

**Catalog # / Size:** 1266505 / 25 tests  
1266510 / 100 tests

**Clone:** 145-2C11, RB6-8C5, M1/70, RA3-6B2, Ter-119

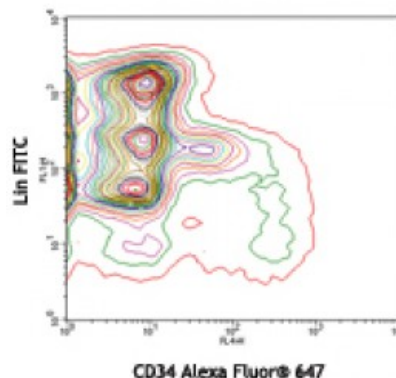
**Isotype:** Hamster IgG, Rat IgG2a, Rat IgG2b

**Reactivity:** Mouse

**Preparation:** The antibodies are purified by affinity chromatography, and conjugated with FITC under optimal conditions. The solution are free of unconjugated FITC.

**Formulation:** This two-reagent set contains FITC conjugated antibodies and isotype controls in optimal concentration for flow cytometric analysis.

**Concentration:** Lot-specific

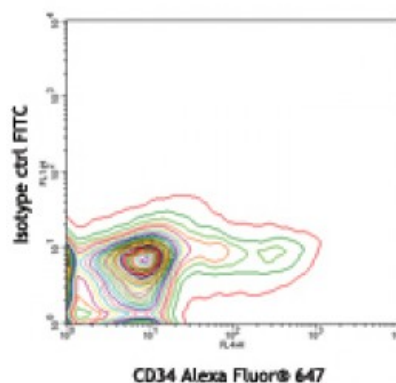


C57BL/6 bone marrow cells stained with FITC Lineage Cocktail and CD34 (clone RAM34) Alexa Fluor® 647

**Applications:**

**Applications:** Flow Cytometry

**Recommended Usage:** Each lot of these antibodies is quality control tested by immunofluorescent staining with flow cytometric analysis. For flow cytometric staining, the suggested use of this reagent is 20 microL per million cells or 20 microL per 100 microL of whole blood. It is recommended that the reagent be titrated for optimal performance for each application.



C57BL/6 bone marrow cells stained with FITC isotype control cocktail and CD34 (clone RAM34) Alexa Fluor® 647

**Application References:**

1. Morris SJ, *et al.* 1997. *Development*. 124(10):1929-1939
2. Okada S, *et al.* 1992. *Blood* 180 (12):3044-3050
3. Spangrude GJ, *et al.* 1988. *Science* 241 (4861):58-62
4. Spangrude GJ, *et al.* 1990. *Exp Hematol*. 18 (8):920-926
5. Tan SL, *et al.* 2006. *J. Immunol*. 176:2872. [PubMed](#)
6. Chen G, *et al.* 2014. *Cancer Immunol Res*. 2:949. [PubMed](#)

**Description:** The mouse lineage panel has been designed to react with cells from the major hematopoietic cell lineages, such as T lymphocytes, B lymphocytes, monocytes/macrophages, granulocytes, NK cells, and erythrocytes. The FITC Mouse Lineage Antibody Cocktail is designed for the flow cytometric identification of hematopoietic progenitors in mouse bone marrow. Components include anti-mouse CD3e, clone 145-2C11; anti-mouse Ly-6G/Ly-6C, clone RB6-8C5; anti-mouse CD11b, clone M1/70; anti-mouse CD45R/B220, clone RA3-6B2; anti-mouse TER-119/Erythroid cells, clone Ter-119. FITC Mouse Lineage Isotype Control Cocktail contains equivalent concentrations of isotype-matched negative control

immunoglobulin.

**Materials provided:**

1. FITC anti-mCD3/ FITC anti-mGr-1/ FITC anti-mCD11b/ FITC anti-mCD45R(B220)/ FITC anti-mTer-119, 25 or 100 tests
2. FITC Armenian hamster IgG/ FITC Rat IgG2b/ FITC Rat IgG2a isotype controls, 25 or 100 tests

**Materials not provided:**

Cell Staining Buffer (Cat. No. 420201)