

**PE anti-mouse CD155 (PVR)**

**Catalog # / Size:** 1257535 / 25 µg  
1257540 / 100 µg

**Clone:** TX56

**Isotype:** Rat IgG2a, κ

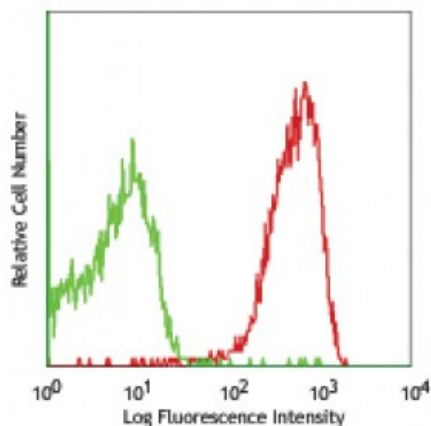
**Immunogen:** CD155 transfectants

**Reactivity:** Mouse

**Preparation:** The antibody was purified by affinity chromatography, and conjugated with PE under optimal conditions. The solution is free of unconjugated PE and unconjugated antibody.

**Formulation:** Phosphate-buffered solution, pH 7.2, containing 0.09% sodium azide.

**Concentration:** 0.2



C57BL/6 thymocytes stained with TX56 PE

**Applications:**

**Applications:** Flow Cytometry

**Recommended Usage:** Each lot of this antibody is quality control tested by immunofluorescent staining with flow cytometric analysis. For flow cytometric staining, the suggested use of this reagent is  $\leq 0.25$  microg per  $10^6$  cells in 100 microL volume. It is recommended that the reagent be titrated for optimal performance for each application.

**Application References:** 1. Tahara-Hanaoka S, *et al.* 2004. *Int. Immunol.* 16:533.  
2. Maier MK, *et al.* 2007. *Eur. J. Immunol.* 37:2214.  
3. Bottino C, *et al.* 2003. *J. Exp. Med.* 198:557.  
4. Dressel R, *et al.* 2010. *FASEB J.* 9:134. [PubMed](#)

**Description:** Mouse CD155, also known as homolog of polivirus receptor (PVR), is the founding member of a subfamily of immunoglobulin-like adhesion receptors (nectins). Mouse CD155 is expressed on a wide variety of cells of hematopoietic origin apart from its existence on the epithelial cells. The engagement of CD155 with CD226 and CD96 induces cytotoxicity of NK cells and CTL.

**Antigen References:** 1. Mendelsohn C, *et al.* 1989. *Cell* 56:855.