

PE anti-mouse CD194 (CCR4)

Catalog # / Size: 1256015 / 25 µg
1256020 / 100 µg

Clone: 2G12

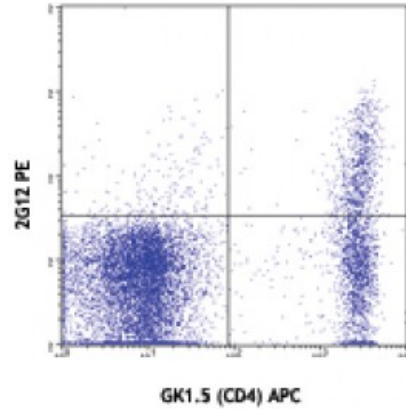
Isotype: Hamster IgG

Reactivity: Mouse

Preparation: The antibody was purified by affinity chromatography, and conjugated with PE under optimal conditions. The solution is free of unconjugated PE and unconjugated antibody.

Formulation: Phosphate-buffered solution, pH 7.2, containing 0.09% sodium azide.

Concentration: 0.2



Hyper-immunized BALB/c splenocytes stained with GK1.5 (CD4) APC and 2G12 PE

Applications:

Applications: Flow Cytometry

Recommended Usage: Each lot of this antibody is quality control tested by immunofluorescent staining with flow cytometric analysis. For flow cytometric staining, the suggested use of this reagent is ≤ 1.0 microg per 10⁶ cells in 100 microL volume. It is recommended that the reagent be titrated for optimal performance for each application.

Application References:

1. Saito K, *et al.* 2008. *J. Immunol.* 181:6889. [PubMed](#)
2. Ueha S, *et al.* 2007. *J. Leukoc. Biol.* 82:1230. [PubMed](#)
3. Sharma R, *et al.* 2009 *J. Immunol.* 183:1065 (FC) [PubMed](#)
4. Dogan R, *et al.* 2011. *J. Leukoc. Biol.* 89:93. [PubMed](#)
5. Moriwaki A, *et al.* 2011. *Am J Respir Cell Mol Biol.* 44:448. [PubMed](#)
6. Liu Y, *et al.* 2013. *Cancer Res.*73:550. [PubMed](#)
7. Loebbermann J, *et al.* 2013. *PNAS.* 110:2987 [PubMed](#)
8. Suga H, *et al.* 2013. *J. Immunol.* 190:6059. [PubMed](#)
9. Xia S, *et al.* 2014. *J Leukoc Biol.* 95:733. [PubMed](#)

Description: Mouse CCR4 cDNA contains 1531 bp, and encodes a protein of 360 amino acids that is 85% identical to human CCR4. CCR4 binds CCL17 (TARG) and CCL22 (MDC). Naïve T cells, bearing receptors for cutaneous antigens, become activated in skin-draining lymph nodes and express cutaneous lymphocyte antigen (CLA), which confers to these cells the capacity to migrate into the skin to exert their normal effector functions (1). CCR4 and CCR10 play an important role in the ligand-mediated recruitment of T cells into the skin in mice and humans, specifically with regards to tethering, firm adhesion, and subsequent extravasation to the site of injury (2,3). CCR4 is expressed in cutaneous regulatory T cells (Tregs). These cells are crucial for the induction and maintenance of self-tolerance and are present in peripheral tissues such as skin and gut under normal, noninflamed conditions (4). In addition, recruitment of Foxp3+ T regulatory cells mediating allograft tolerance depends on the CCR4 chemokine receptor and its ligand CCL22 (5).

Antigen References:

1. Biederman T, *et al.* 2002. *Eur. J. Immun.* 32:3171.
2. Mirshahpanah P, *et al.* 2008. *Exp. Dermatol.* 17:30.

3. Kusumoto M, *et al.* 2007. *J. Interferon Cytokine Res* 27:901.
4. Clark RA a