

PE anti-mouse Tim-4

Catalog # / Size: 1250025 / 25 µg
1250030 / 100 µg

Clone: RMT4-54

Isotype: Rat IgG2a, κ

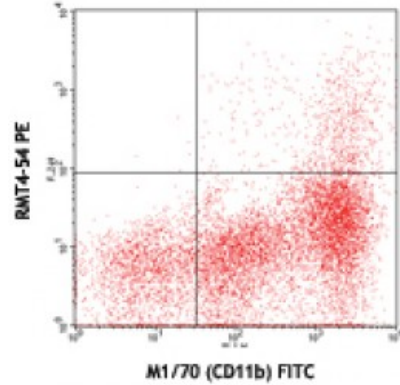
Immunogen: Mouse TIM4-Ig fusion protein

Reactivity: Mouse

Preparation: The antibody was purified by affinity chromatography, and conjugated with PE under optimal conditions. The solution is free of unconjugated PE and unconjugated antibody.

Formulation: Phosphate-buffered solution, pH 7.2, containing 0.09% sodium azide.

Concentration: 0.2



BALB/c peritoneal macrophages stained with RMT4-54 PE and M1/70 (CD11b) FITC

Applications:

Applications: Flow Cytometry

Recommended Usage: Each lot of this antibody is quality control tested by immunofluorescent staining with flow cytometric analysis. For flow cytometric staining, the suggested use of this reagent is ≤0.25 microg per million cells in 100 microL volume. It is recommended that the reagent be titrated for optimal performance for each application.

Application Notes: Additional reported applications (for the relevant formats of this clone) include: *in vivo* induction of auto-antibody production¹ and blockade of dendritic cell Tim-42.

Application References:

1. Nakayama M, *et al.* 2009. *Blood*. 113:3821. (FA)
2. Yeung MY, *et al.* 2013. *J. Immunol.* 191:4447. (Block)

Description: Tim-4 is a transmembrane protein known as T cell immunoglobulin and mucin domain containing protein-4. It is expressed on antigen-presenting cells and not on T cells. Tim-4 binds to Tim-1 to promote T cell proliferation by enhancing cell division and reducing apoptosis. Tim-4 bind to phosphatidylserine through its FG-CC' binding cleft in the N-terminal IgV domain to facilitate the clearance of apoptotic cells or bodies.

Antigen References:

1. Kuchroo VK, *et al.* 2008. *Nat. Rev. Immunol.* 8:577
2. Miyanishi M, *et al.* 2007. *Nature* 450:435
3. Rodriguez-Manzanet R, *et al.* 2008. *J. Immunol.* 180:4706