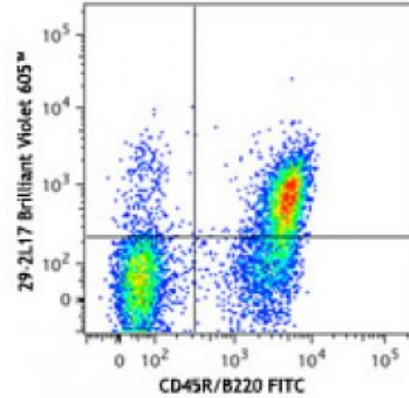


Brilliant Violet 605™ anti-mouse CD196 (CCR6)

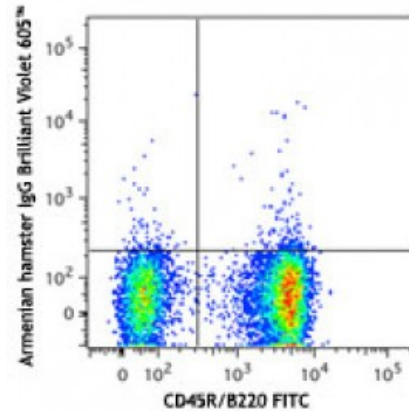
Catalog # / Size: 1249095 / 50 µg
Clone: 29-2L17
Isotype: Hamster IgG
Immunogen: N-terminal peptide (aa. 2-38) of mouse CCR6 fused with GST
Reactivity: Mouse
Preparation: The antibody was purified by affinity chromatography and conjugated with Brilliant Violet 605™ under optimal conditions. The solution is free of unconjugated Brilliant Violet 605™ and unconjugated antibody.
Formulation: Phosphate-buffered solution, pH 7.2, containing 0.09% sodium azide and BSA (origin USA).
Concentration: 0.2



C57BL/6 mouse splenocytes were stained with CD45R/B220 FITC and CCR6 (clone 29-2L17) Brilliant Violet 605™ (top) or Armenian hamster IgG Brilliant Violet 605™ isotype control (bottom).

Applications:

Applications: Flow Cytometry
Recommended Usage: Each lot of this antibody is quality control tested by immunofluorescent staining with flow cytometric analysis. For flow cytometric staining, the suggested use of this reagent is ≤0.5 microg per million cells in 100 microL volume or 100 microL of whole blood. It is recommended that the reagent be titrated for optimal performance for each application.



Brilliant Violet 605™ excites at 405 nm and emits at 603 nm. The bandpass filter 610/20 nm is recommended for detection, although filter optimization may be required depending on other fluorophores used. **Be sure to verify that your cytometer configuration and software setup are appropriate for detecting this channel.** Refer to your instrument manual or manufacturer for support. Brilliant Violet 605™ is a trademark of Sirigen Group Ltd.

This product is subject to proprietary rights of Sirigen Inc. and is made and sold under license from Sirigen Inc. The purchase of this product conveys to the buyer a non-transferable right to use the purchased product for research

purposes only. This product may not be resold or incorporated in any manner into another product for resale. Any use for therapeutics or diagnostics is strictly prohibited. This product is covered by U.S. Patent(s), pending patent applications and foreign equivalents.

Description: CCR6 is a G-protein linked chemokine receptor which binds the chemokine CCL20/MIP-3a. It is expressed on B lymphocytes and certain subsets of dendritic cells and T cells. CCR6 is reported to be involved in mucosal immune response and lymphocyte migration and homeostasis.

Antigen
References:

1. Rossi D, *et al.* 1997. *J. Immunol.* 158:1033.
2. Lukacs N, *et al.* 2001. *J. Exp. Med.* 194:551.
3. Cook DN, *et al.* 2000. *Immunity* 12:495